

TASMANIAN STATISTICAL INDICATORS

EMBARGO: 11:30AM (CANBERRA TIME) THURS 8 JUNE 2000

C O N T E N T S

	<i>page</i>
Notes	2
Main features	3
List of tables.	8

SUBJECT AREAS

1 Population and demography	9
2 Labour force	10
3 Wages and prices	18
4 Production	24
5 Primary industry	25
6 Building	29
7 Finance	30
8 Tourism	32
9 Transport	34
10 Retail trade.	35
11 Overseas trade	36
12 Australia and State comparisons.	38
13 Tasmanian Statistical Divisions comparisons.	40

ADDITIONAL INFORMATION

Map: Tasmanian Statistical Divisions.	42
---	----

- For further information about these and related statistics, contact the National Information Service on 1300 135 070 or Wally Van Schie on Hobart 03 6222 5812.

NOTES

FORTHCOMING ISSUES

<i>ISSUE</i>	<i>RELEASE DATE</i>
July 2000	10 July 2000
August 2000	8 August 2000
September 2000	8 September 2000
October 2000	9 October 2000
November 2000	8 November 2000
December 2000	8 December 2000

INTRODUCTION

1 This publication contains latest figures for a comprehensive range of economic indicators. Statistics shown in this publication are the latest available at the date of preparation and may be subject to revision in subsequent issues. In a number of cases figures appearing in this publication are preliminary and are subject to revision in subsequent issues. Reference should therefore always be made to the latest issue or to the statistical publication on the specific subject.

SEASONAL ADJUSTMENT AND TREND ESTIMATION

2 Seasonal adjustment is a means of removing the estimated effects of normal seasonal variation from the series so that the effects of other influences on the series can be more clearly recognised. Seasonal adjustment does not aim to remove the irregular or non-seasonal influences which may be present in any particular month. This means that month-to-month movements of the seasonally adjusted estimates may not be reliable indicators of trend behaviour.

3 The smoothing of seasonally adjusted series reduces the impact of the irregular components of the seasonally adjusted series and creates trend estimates. These trend estimates are derived by applying a 13-term Henderson-weighted moving average to all months except the last six. The last six monthly trend estimates are obtained by applying surrogates of the Henderson average to the seasonally adjusted series.

4 While this smoothing technique enables estimates to be produced for the latest month, it does result in revisions to the most recent months as additional observations become available. Generally, subsequent revisions become smaller and after 3 months have a negligible impact on the series.

SYMBOLS AND OTHER USAGES

n.a.	not available
n.p.	not available for separate publication (but included in totals where applicable)
n.y.a.	not yet available
..	not applicable
—	nil or rounded to zero
p	preliminary—figure or series subject to revision
r	figure or series revised since previous issue

Stevan R. Matheson
Regional Director, Tasmania

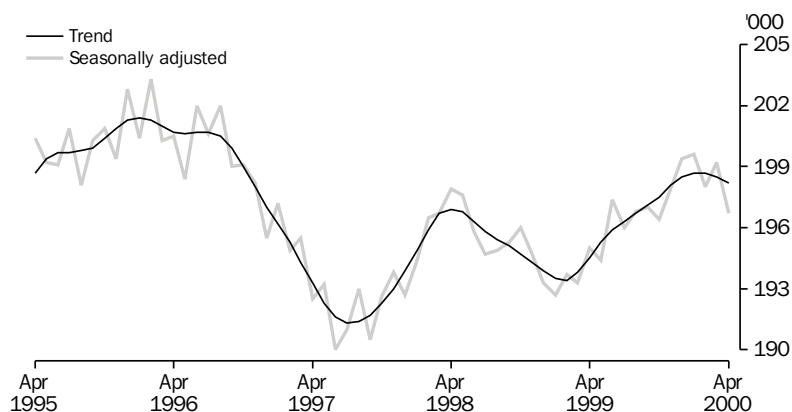
MAIN FEATURES

EMPLOYMENT

State comparisons
Trend estimates

There was an increase of 1.9% in Tasmania's employment over the 12 months to April 2000. The largest percentage increase in employment was in New South Wales (3.9%), followed by Western Australia (3.6%), Victoria and South Australia (2.8%), and Queensland (1.9%). The increase in Australia's employment over the same period was 3.1% (see table 39 and *Labour Force, Australia, Preliminary* (Cat. no. 6202.0)).

EMPLOYMENT, TASMANIA

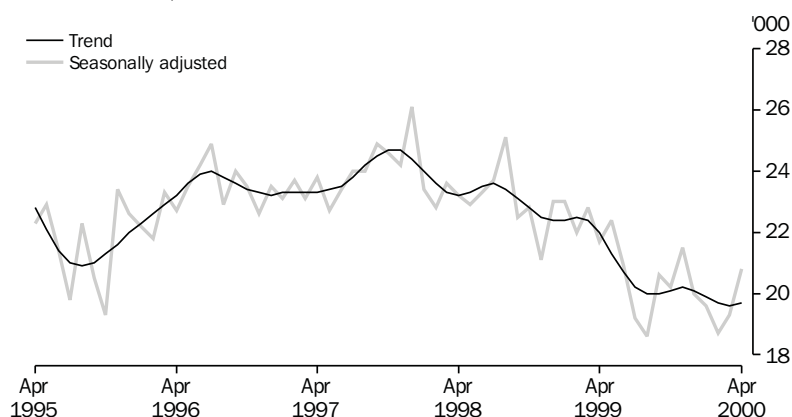


THE LABOUR FORCE

Trend estimates

There were an estimated 217,900 persons (based on trend estimates) in the labour force in April 2000 and an estimated 370,500 civilian Tasmanians aged 15 years or more, yielding a labour force participation rate of 58.8%. This compares with 58.5% in April 1999. The Australian labour force participation rate for April 2000 was 63.6%. This compares with 63.0% in April 1999 (see table 39 and *Labour Force, Australia, Preliminary* (Cat. no. 6202.0)).

UNEMPLOYMENT, TASMANIA



For Tasmanian males, the trend estimate of the participation rate was 66.6%, compared with 68.3% in April 1999. For Tasmanian females, the trend estimate of the participation rate was 51.4%, compared with 49.2% in April 1999 (see table 3).

UNEMPLOYMENT

Trend estimates The trend estimate of the number of unemployed persons in Tasmania for April 2000 was 19,700. This compares with 22,000 in April 1999. The trend estimate of the unemployment rate of 9.0% in April 2000 compares with 10.2% in April 1999. The Australian trend estimate of the unemployment rate of 6.8% in April 2000 compares with 7.4% in April 1999 (see table 3 and 39, and *Labour Force, Australia, Preliminary* (Cat. no. 6202.0)).

LIVESTOCK SLAUGHTERING

Trend estimates Monthly movements of trend estimates showed rises in all three livestock slaughtering series with cattle and calves up by 4.1%, sheep and lambs up by 3.1% and pigs up by 2.3%.

In March 2000, the trend estimate of the number of cattle and calves slaughtered was 24,700. This was up 13.4% on the number for March 1999 and up 4.5% on the number for March 1998.

The trend estimate for the slaughtering of sheep and lambs was 87,100 in March 2000. This was 17.9% more than for March 1999, and 20.1% above the number for March 1998.

The trend estimate of 5,600 pigs slaughtered in March 2000 was 15.1% less than for March 1999 and 10.7% less than the trend estimate for March 1998 (see table 21).

BUILDING APPROVALS

Original terms There were 165 dwelling units approved during March 2000. This was 1.8% below the February 2000 figure of 168, but 31.0% above the March 1999 figure of 126.

The number of dwellings approved in the first three months of 2000 decreased, from 180 in January to 165 in March. Clarence (57), Hobart (55) and Kingborough (54) recorded the highest number of dwelling approvals for the three months ended March 2000.

At current prices, the value of total building was \$30.5 million in March 2000. This was 27.7% below the February 2000 figure of \$42.2 million and 3.5% below the March 1999 figure of \$31.6 million. Residential building contributed \$21.1 million and non-residential building \$9.3 million in March 2000 (see table 27 and *Building Approvals, Tasmania* (Cat. no. 8731.6)).

ENGINEERING CONSTRUCTION ACTIVITY

Original terms In original terms, the value of engineering construction work commenced in Tasmania in the December quarter 1999 was \$53.0 million, 24.6% below that in the September quarter 1999 and 28.0% above that in the December quarter 1998. Some 72.8% of the value of work commenced during the period was by the public sector (\$38.6 million).

Original terms *continued*

The value of work done in Tasmania in the December quarter 1999 was \$53.1 million, 13.9% above that in the September quarter 1999 and 13.9% below that in the December quarter 1998. The value of work done by the public sector during the period was \$34.8 million.

The value of work yet to be done in Tasmania in the December quarter 1999 was \$45.6 million, 13.6% below that in the September quarter 1999 and 20.3% below that in the December quarter 1998. Some 52.9% of the value of work yet to be done was work by the public sector (\$24.1 million) (see *Engineering Construction Activity, Australia* (Cat. no. 8762.0)).

HOUSING FINANCE

Trend estimates

The trend estimate for the number of secured housing finance commitments entered into in Tasmania in March 2000 was 774 dwellings, lower than the previous month's 793, and also lower than the March 1999 figure of 885. The total value of commitments in March 2000 was \$66 million, lower than the previous months \$67 million. The March 2000 figure was lower than the March 1999 figure when the total value of commitments was \$76 million.

Nationally, the total number of secured housing commitments entered into in March 2000 was 45,747, a decrease from the previous month's figure of 46,692. The value of these commitments decreased between February and March 2000 from \$6,540 million to \$6,418 million (see table 28).

GOVERNMENT FINANCIAL ESTIMATES

Government Finance Statistics, Tasmania, 1998–99 (Cat. no. 5501.6), released on 31 May 2000, provides a measure of the economic impact of the two levels of government (State and local) on the rest of the economy. The 1998–99 financial year is the first year for which the ABS has produced Government Finance Statistics (GFS) on an accrual basis, in which revenues, expenses, lending and borrowing are recorded as they are earned, accrued or incurred regardless of when a payment is made or received. Tables presented include operating, cash flow and balance sheet data for the State and local general government sector, Public Non-financial Corporations (PNFCs), and Public Financial Corporations (PFCs). In addition, individual council level tables illustrate operating statement, gross operating expenses by purpose and balance sheets. These tables provide a major source of data for the State Grants Commission.

Tasmania's 29 local governments returned a Net Operating Balance (NOB) of \$1 million in 1998–99, resulting from \$425 million revenue and \$424 million in expenses. Sales of goods and services, including the water, sewerage and garbage components of rates, were the major revenue source, accounting for 41.6% of revenue. The largest expense area was transport and communication (25%) while interest comprised 3.5%, reflecting the low debt level of the local government sector.

GOVERNMENT FINANCIAL
ESTIMATES *continued*

The local government sector balance sheet shows a net worth of \$3,661 million at 30 June 1999, equating to 8.6 times the 1998–99 revenue. Flinders Council showed the highest net worth per head (\$43,533), reflecting its low population and the predominantly grant funding of its asset base, while Derwent Valley recorded the lowest (\$2,409 per head).

Tasmania State Government returned a NOB, on a GFS basis, of –\$41 million in 1998–99 (expenses, including depreciation, exceeded revenues by \$41 million). The net worth of the State Government on a GFS basis was estimated at \$5,155 million at 30 June 1999. Land and fixed assets constituted 79% of assets, with borrowing and Commonwealth advances (57%) and unfunded superannuation liability and other employee entitlements (28.7%) making up the bulk of the liabilities.

TOURIST ACCOMMODATION

Original terms Rooms and units available in licensed hotels, motels and guest houses, and serviced apartments with 15 or more rooms or units decreased by 1.1% in the December quarter 1999 compared with the December quarter 1998; however, there was an increase in capacity of motels and guest houses (0.2%) and serviced apartments (0.1%).

Rooms nights occupied decreased overall by 0.1% in the December quarter 1999 compared with the December quarter 1998. Room occupancy rates decreased from 56.2% to 56.0% overall, with rates decreasing for licensed hotels with facilities (from 56.7% to 56.2%) and motels and guest houses (from 53.3% to 52.2%), but increasing for serviced apartments (from 60.3% to 62.9%).

Takings from accommodation decreased by 6.2% overall in the December quarter 1999 compared with the December quarter 1998, with takings decreasing for motels and guest houses (by 9.5%) and licensed hotels with facilities (by 9.3%) but increasing for serviced apartments (by 7.7%). Average takings per room night occupied decreased for licensed hotels with facilities (from \$89 to \$81) and motels and guest houses (from \$88 to \$81), but increased for serviced apartments (from \$102 to \$105) (see table 31).

NEW MOTOR VEHICLE
REGISTRATIONS

Original terms There were 1,128 new motor vehicles (excluding motorcycles) registered in Tasmania during March 2000. This was 13.7% above the 992 registered in February 2000 and 8.1% below the March 1999 figure of 1,227. Of the new motor vehicles (excluding motorcycles) registered in March 2000 in Tasmania, 10 were vehicles registered by vehicle rental businesses, compared with one registered by vehicle rental businesses in February 2000 and 20 in March 1999 (see table 34).

RETAIL

Original terms In original terms, the estimate of retail turnover in Australia for March 2000 was \$11,730.9 million, 3.0% above the figure recorded in March 1999. In original terms, the estimate of retail turnover in Tasmania for March 2000 was \$269.0 million, 0.1% above the figure recorded in March 1999.

Trend estimates In trend terms, the estimate of retail turnover in Australia for March 2000 was \$11,909.3 million, 2.7% above the figure recorded in March 1999. In trend terms, the estimate of retail turnover in Tasmania for March 2000 was \$268.1 million, 0.3% above the figure recorded in March 1999. There has been a fall in the trend estimate for each of the past five months. Clothing and Recreational good groups recorded falls in March, while growth in Hospitality/services remained strong (see table 35 and *Retail Trade, Australia* (Cat. no. 8501.0.)).

OVERSEAS TRADE

The total value of Tasmania's overseas exports for the 1998–99 financial year was \$2,019 million. This contributed 2.3% to the Australian total of \$85,991 million.

The value of Tasmania's exports for the month of March 2000 was \$200 million, an increase of 7% over the month of February. Australia's exports for March totalled \$8,817 million, an increase of 7% over the February figure.

Tasmania's major export destinations for the month of March 2000 were Japan (\$37.6m), Hong Kong (\$22.4m) and Taiwan (\$17.8m). Major commodity groups exported for the month were non-ferrous metals (\$75.3m), and wood and woodchips (\$26.4m). For the financial year 1998–99, major commodity groups exported were non-ferrous metals (\$544.3m), wood and woodchips (\$296.2m) and metallic ores and metal scrap (\$278.0m).

CONSUMER PRICE INDEX

The Consumer Price Index (All Groups) for Hobart rose by 1.0% in the March quarter of 2000 and by 2.6% for the year ending March 2000. For the weighted average of the eight capital cities, the index rose 0.9% for the March quarter, and 2.8% for the year.

All capital cities recorded a rise in the index for the year ending March 2000, with Adelaide recording the largest, at 3.3%. Darwin recorded the smallest rise at 1.9%.

WATER ACCOUNT

The Water Account is part of a series of physical environmental accounts that are being developed by the Australian Bureau of Statistics, focusing on the quantitative characteristics of Australia's water resources.

In 1996–97, net water consumption in Australia totalled 22,186 gigalitres (GL), with Tasmania consuming 1.4%. Household water consumption in Australia totalled an estimated 1,829 GL. Mean household water use was highest in the Northern Territory (500 kilolitres per year). Tasmanian households used the least amount of water (average 176 kilolitres per year) (*Water Account for Australia, 1993–94 to 1996–97* (Cat. no. 4610.0)).

LIST OF TABLES

1	Population	9
2	Births, deaths and marriages	9
3	Labour force status	10
4	Labour force status by region, males	11
5	Labour force status by region, females	12
6	Labour force status by region, persons	13
7	Teenage labour market	14
8	All employed persons by occupation	15
9	Employed wage and salary earners, sector and industry	16
10	Average hours worked	16
11	Job vacancies	17
12	Industrial disputes	17
13	Average weekly earnings of employees	18
14	Indexes of total hourly rates of pay	19
15	Summary of annual movements in wages and prices	20
16	House price index numbers, Hobart	20
17	Consumer price index, Hobart and eight capital cities combined	21
18	Price index of materials used in building other than house building, Hobart	22
19	Production of selected commodities	24
20	Livestock slaughtering: original	25
21	Livestock slaughtering: seasonally adjusted and trend	25
22	Meat production	26
23	Principal mineral concentrates produced	26
24	Sawmills and plywood mills, logs delivered and timber produced	27
25	Chipping and grinding of wood	28
26	Logs delivered for milling or chipping	28
27	Building approvals	29
28	Secured housing commitments	30
29	Private new capital expenditure by type of asset	30
30	Banking statistics	31
31	Accommodation establishments	32
32	National Parks, person entries	33
33	Tracks in National Parks, walker registrations	33
34	Registrations of new motor vehicles	34
35	Turnover of retail establishments at current prices	35
36	Value of overseas trade—Tasmania and Australia	36
37	Merchandise exports by selected countries and country groups	36
38	Merchandise exports by selected commodity groups	37
39	Major Statistical Indicators—Australia and State comparisons	38
40	Major Statistical Indicators—Tasmanian Statistical Divisions	40

1

POPULATION

	<i>Estimated resident population at end of period</i>	<i>Natural increase(a)</i>	<i>Net estimated migration gain</i>	<i>Total population growth</i>	<i>Annual growth rate(b)</i>
	'000	'000	'000	'000	%
1997	473.5	2.4	-3.4	-1.0	-0.20
1998	471.7	2.1	-3.9	-1.8	-0.38
1999	470.3	2.5	-3.9	-1.4	-0.31
1997					
September qtr	473.1	0.4	-0.9	-0.4	-0.31
December qtr	472.6	0.5	-1.0	-0.4	-0.34
1998					
March qtr	472.3	0.6	-1.0	-0.3	-0.38
June qtr	471.7	0.5	-1.1	-0.6	-0.38
September qtr p	471.4	0.5	-0.8	-0.3	-0.36
December qtr p	470.9	0.7	-1.2	-0.4	-0.36
1999					
March qtr p	470.5	0.6	-1.0	-0.5	-0.39
June qtr p	470.3	0.7	-0.9	-0.2	-0.31
September qtr p	470.1	0.5	-0.6	-0.1	-0.26

(a) Excess of live births registered over deaths registered (based on usual State of residence).

(b) Percentage growth from same quarter in previous year.

Source: Australian Demographic Statistics (Cat. no. 3101.0).

2

BIRTHS, DEATHS AND MARRIAGES(a)

	<i>Births</i>		<i>Deaths</i>		<i>Infant mortality(b)</i>		<i>Marriages</i>	
	<i>no.</i>	<i>rate(c)</i>	<i>no.</i>	<i>rate(d)</i>	<i>no.</i>	<i>rate(e)</i>	<i>no.</i>	<i>rate(f)</i>
1996	6 337	1.854	3 826	7.0	28	4.4	2 654	5.6
1997	5 974	1.768	3 837	6.8	43	7.2	2 672	5.6
1998	5 909	1.809	3 557	6.3	30	5.1	2 599	5.0
1997								
September qtr	1 500	..	1 067	..	12	8.0	554	..
December qtr	1 486	..	939	..	12	8.1	618	..
1998								
March qtr	1 464	..	839	..	3	2.0	800	..
June qtr	1 420	..	921	..	11	7.7	810	..
September qtr	1 541	..	1 029	..	9	5.8	331	..
December qtr	1 484	..	768	..	7	4.7	658	..
1999								
March qtr p	1 471	..	914	..	9	6.1	808	..
June qtr p	1 582	..	909	..	12	7.6	636	..
September qtr p	1 555	..	1 035	..	16	10.3	327	..

(a) Usual residents of Tasmania.

(b) Deaths of children under one year of age.

(c) Total fertility rate. The sum of age specific fertility rates (live births at each age of a mother per female population of that age). It represents the number of children a woman would bear during her lifetime if she experienced age-specific fertility rates at each age of her reproductive life.

(d) Standardised death rate. The overall death rate, per 1,000 persons, that would have prevailed in a standard population if it had experienced at each age the death rates of the population being studied. The standard population used in these calculations is all persons in the 1991 Australian population.

(e) Rate per 1,000 live births.

(f) Crude marriage rate is the number of marriages registered during the calendar year, per 1,000 estimated resident population at 30 June of that year.

Source: Australian Demographic Statistics (Cat. no. 3101.0).

3

LABOUR FORCE STATUS(a)—SEASONALLY ADJUSTED AND TREND

	Seasonally adjusted series(b)				Trend series(b)			
	Employed	Unemployed	Unemployment rate	Participation rate	Employed	Unemployed	Unemployment rate	Participation rate
	'000	'000	%	%	'000	'000	%	%
MALES								
1999								
April	109.1	13.9	11.3	68.2	108.7	14.4	11.7	68.3
May	109.2	14.6	11.8	68.7	109.5	13.9	11.3	68.4
June	111.0	13.4	10.8	69.0	110.1	13.3	10.8	68.5
July	110.5	12.7	10.3	68.3	110.4	12.9	10.5	68.4
August	110.5	11.5	9.4	67.7	110.4	12.7	10.3	68.3
September	110.2	13.1	10.6	68.4	110.4	12.6	10.3	68.3
October	109.8	12.5	10.2	67.9	110.2	12.6	10.3	68.2
November	109.9	13.5	10.9	68.5	110.1	12.5	10.2	68.1
December	110.5	12.4	10.1	68.2	110.0	12.3	10.1	67.8
2000								
January	109.8	11.8	9.7	67.5	109.8	11.9	9.8	67.5
February	109.7	10.9	9.1	66.9	109.6	11.6	9.5	67.2
March	109.3	11.0	9.1	66.7	109.3	11.3	9.3	66.9
April	108.5	11.6	9.7	66.6	109.1	11.1	9.2	66.6
FEMALES								
1999								
April	85.9	7.8	8.4	49.4	85.7	7.6	8.1	49.2
May	85.2	7.9	8.4	49.0	85.8	7.4	8.0	49.1
June	86.4	7.4	7.9	49.5	85.8	7.3	7.9	49.1
July	85.5	6.6	7.1	48.5	85.9	7.3	7.8	49.1
August	86.4	7.2	7.7	49.3	86.2	7.3	7.8	49.3
September	86.8	7.5	8.0	49.7	86.7	7.4	7.8	49.6
October	86.6	7.6	8.1	49.6	87.3	7.5	7.9	50.0
November	88.0	8.0	8.4	50.6	88.0	7.7	8.0	50.4
December	88.9	7.6	7.9	50.8	88.5	7.8	8.1	50.7
2000								
January	89.8	7.9	8.1	51.4	88.9	8.0	8.2	51.0
February	88.3	7.8	8.1	50.6	89.1	8.1	8.4	51.2
March	89.9	8.3	8.5	51.7	89.2	8.4	8.6	51.3
April	88.2	9.2	9.4	51.2	89.2	8.6	8.8	51.4
TOTAL								
1999								
April	195.0	21.7	10.0	58.6	194.5	22.0	10.2	58.5
May	194.4	22.4	10.3	58.6	195.3	21.3	9.9	58.5
June	197.4	20.9	9.6	59.0	195.9	20.7	9.5	58.5
July	196.0	19.2	8.9	58.2	196.3	20.2	9.3	58.5
August	196.8	18.6	8.6	58.2	196.7	20.0	9.2	58.6
September	197.0	20.6	9.5	58.8	197.1	20.0	9.2	58.7
October	196.4	20.2	9.3	58.5	197.5	20.1	9.2	58.8
November	197.9	21.5	9.8	59.3	198.1	20.2	9.2	59.0
December	199.4	20.0	9.1	59.3	198.5	20.1	9.2	59.1
2000								
January	199.6	19.6	9.0	59.2	198.7	19.9	9.1	59.0
February	198.0	18.7	8.6	58.5	198.7	19.7	9.0	59.0
March	199.2	19.3	8.9	59.0	198.5	19.6	9.0	58.9
April	196.7	20.8	9.6	58.7	198.2	19.7	9.0	58.8

(a) For explanation of terms and concepts, refer to *Labour Force, Australia* (ABS Cat. no. 6203.0).

(b) Seasonal factors are reviewed annually to take account of each additional year's data. The results of the review are used to compile revised seasonally adjusted and trend estimates each February. Trend estimates for the most recent months are also revised each month; see Notes on page 2.

Source: *Labour Force, Australia* (Cat. no. 6203.0).

4

LABOUR FORCE STATUS BY REGION—MALES(a)(b)

	<i>Total employed</i>	<i>Total unemployed</i>	<i>Unemployment rate</i>	<i>Participation rate</i>
	'000	'000	%	%
HOBART AND SOUTHERN STATISTICAL DIVISIONS				
1997				
April	54.2	6.7	11.1	68.0
1999				
April	53.2	6.6	11.1	68.9
2000				
February	51.9	5.4	9.4	65.6
March	51.7	5.0	8.7	65.4
April	51.0	5.3	9.5	64.7
NORTHERN STATISTICAL DIVISION				
1997				
April	32.1	3.9	10.9	69.8
1999				
April	31.5	3.9	11.0	69.1
2000				
February	31.6	2.9	8.5	67.2
March	32.6	2.5	7.1	67.6
April	32.8	2.8	7.9	67.6
MERSEY-LYELL STATISTICAL DIVISION				
1997				
April	24.3	3.7	13.2	72.1
1999				
April	25.3	3.1	10.9	67.0
2000				
February	26.4	3.3	11.0	71.4
March	25.4	3.8	13.1	70.0
April	25.7	3.3	11.3	71.5
TASMANIA				
1997				
April	110.7	14.4	11.5	69.4
1999				
April	110.0	13.6	11.0	68.5
2000				
February	109.9	11.5	9.5	67.4
March	109.7	11.3	9.3	67.1
April	109.5	11.4	9.4	67.1

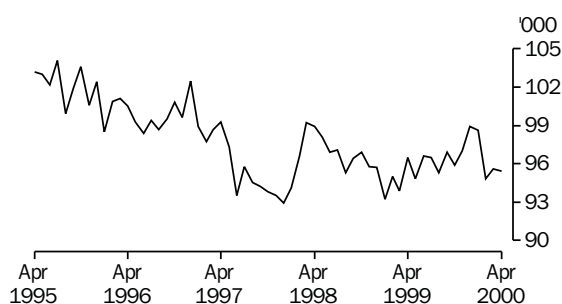
(a) For explanation of terms and concepts, refer to *Labour Force, Australia* (Cat. no. 6203.0).

(b) Data in this table are original series, i.e. they are not part of a seasonally adjusted or a trend series. Accordingly, care should be exercised when using these data.

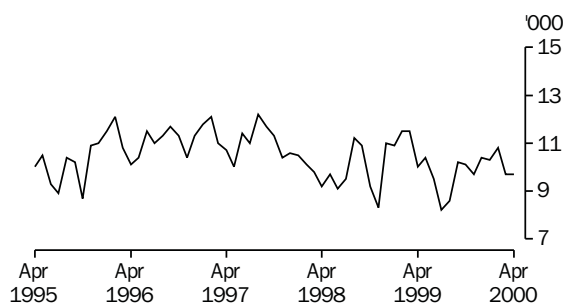
Source: *Labour Force, Selected Summary Tables, Australia* (Cat. no. 6291.0.40.001).

Hobart and Southern Statistical Divisions—Persons (see table 6)

EMPLOYMENT



UNEMPLOYMENT



5

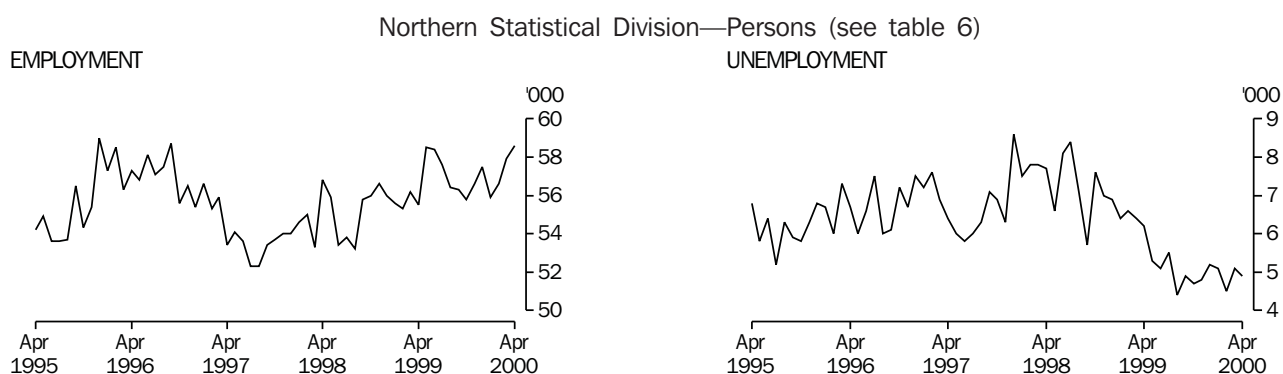
LABOUR FORCE STATUS BY REGION—FEMALES(a)(b)

	<i>Total employed</i>	<i>Total unemployed</i>	<i>Unemployment rate</i>	<i>Participation rate</i>
	'000	'000	%	%
HOBART AND SOUTHERN STATISTICAL DIVISIONS				
1997				
April	45.0	4.0	8.1	51.4
1999				
April	43.3	3.4	7.2	50.5
2000				
February	42.9	5.5	11.3	51.3
March	43.9	4.7	9.7	52.2
April	44.4	4.4	9.0	52.4
NORTHERN STATISTICAL DIVISION				
1997				
April	21.2	2.5	10.5	45.6
1999				
April	23.9	2.3	8.7	50.2
2000				
February	25.0	1.6	6.1	48.5
March	25.3	2.7	9.5	50.2
April	25.8	2.1	7.5	50.4
MERSEY-LYELL STATISTICAL DIVISION				
1997				
April	17.7	1.9	9.7	47.3
1999				
April	20.2	1.5	7.1	48.4
2000				
February	19.6	1.6	7.3	51.8
March	20.7	1.4	6.1	53.5
April	19.6	1.9	8.9	51.4
TASMANIA				
1997				
April	83.9	8.4	9.1	48.9
1999				
April	87.5	7.2	7.6	49.9
2000				
February	87.5	8.6	9.0	50.6
March	89.9	8.7	8.9	51.9
April	89.7	8.4	8.6	51.6

(a) For explanation of terms and concepts, refer to *Labour Force, Australia* (Cat. no. 6203.0).

(b) Data in this table are original series, i.e. they are not part of a seasonally adjusted or a trend series. Accordingly, care should be exercised when using this data.

Source: *Labour Force, Selected Summary Tables, Australia* (Cat. no. 6291.0.40.001).



6

LABOUR FORCE STATUS BY REGION—PERSONS(a)(b)

	<i>Total employed</i>	<i>Total unemployed</i>	<i>Unemployment rate</i>	<i>Participation rate</i>
	'000	'000	%	%
HOBART AND SOUTHERN STATISTICAL DIVISIONS				
1997				
April	99.3	10.7	9.8	59.4
1999				
April	96.5	10.0	9.4	59.4
2000				
February	94.8	10.8	10.2	58.2
March	95.6	9.7	9.2	58.5
April	95.4	9.7	9.2	58.3
NORTHERN STATISTICAL DIVISION				
1997				
April	53.4	6.4	10.7	57.6
1999				
April	55.5	6.2	10.0	59.5
2000				
February	56.6	4.5	7.4	57.6
March	57.9	5.1	8.2	58.6
April	58.6	4.9	7.7	58.8
MERSEY-LYELL STATISTICAL DIVISION				
1997				
April	42.0	5.6	11.8	59.3
1999				
April	45.5	4.6	9.2	57.4
2000				
February	46.0	4.8	9.5	61.7
March	46.1	5.2	10.1	61.8
April	45.2	5.2	10.3	61.3
TASMANIA				
1997				
April	194.6	22.7	10.5	58.9
1999				
April	197.5	20.8	9.5	59.0
2000				
February	197.5	20.2	9.3	58.8
March	199.6	20.0	9.1	59.3
April	199.2	19.8	9.1	59.1

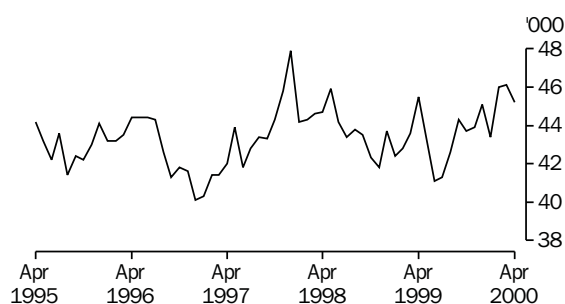
(a) For explanation of terms and concepts, refer to *Labour Force, Australia* (Cat. no. 6203.0).

(b) Data in this table are original series, i.e. they are not part of a seasonally adjusted or a trend series. Accordingly, care should be exercised when using these data.

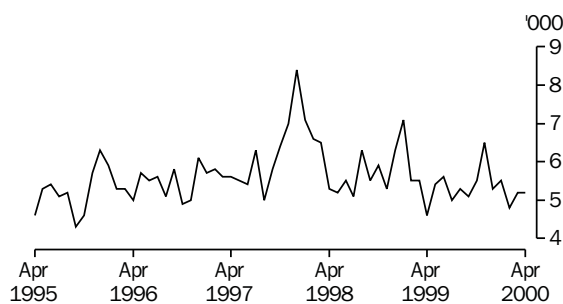
Source: *Labour Force, Selected Summary Tables, Australia* (Cat. no. 6291.0.40.001).

Mersey-Lyell Statistical Division—Persons (see table 6)

EMPLOYMENT



UNEMPLOYMENT



7

TEENAGE LABOUR MARKET(a)

	<i>Employed</i>		<i>Unemployed</i>		<i>Labour force</i>	<i>Not in labour force</i>	<i>Civilian population aged 15–19</i>	<i>Unemployment rate</i>	<i>Unemployment population ratio</i>	<i>Participation rate</i>
	<i>Full time</i>	<i>Total</i>	<i>Looking for full time work</i>	<i>Total</i>						
	'000	'000	'000	'000	'000	'000	'000	%	%	%
ATTENDING NEITHER A SCHOOL NOR A TERTIARY INSTITUTION FULL TIME										
1997										
April	6.1	8.3	2.8	2.9	11.2	1.8	13.0	26.1	22.6	86.4
1999										
April	7.2	9.7	2.1	2.5	12.2	1.4	13.6	20.2	18.1	89.5
2000										
February	5.4	7.3	2.4	2.5	9.8	1.8	11.6	25.1	21.2	84.6
March	6.3	8.2	1.6	1.6	9.8	0.7	10.5	16.7	15.7	93.7
April	5.7	7.9	1.8	1.8	9.6	1.5	11.2	18.2	15.7	86.1
ATTENDING SCHOOL OR A TERTIARY INSTITUTION FULL TIME										
1997										
April	0.4	5.8	0.7	1.8	7.7	13.4	21.1	23.9	8.7	36.4
1999										
April	0.2	6.1	0.3	1.4	7.6	13.3	20.9	18.8	6.8	36.2
2000										
February	0.9	8.5	0.7	2.2	10.6	12.6	23.2	20.3	9.3	45.8
March	0.2	6.3	0.8	3.3	9.6	14.7	24.3	33.9	13.4	39.5
April	0.1	5.5	0.7	3.1	8.6	15.0	23.7	36.3	13.2	36.4
TOTAL										
1997										
April	6.5	14.1	3.5	4.8	18.9	15.2	34.0	25.2	14.0	55.5
1999										
April	7.5	15.9	2.4	3.9	19.8	14.7	34.5	19.7	11.3	57.3
2000										
February	6.3	15.8	3.1	4.6	20.4	14.4	34.8	22.6	13.2	58.7
March	6.4	14.5	2.4	4.9	19.4	15.4	34.8	25.3	14.1	55.8
April	5.8	13.4	2.4	4.9	18.2	16.6	34.8	26.7	14.0	52.3

(a) Persons aged 15–19 years. For explanation of terms and concepts, refer to *Labour Force, Australia* (Cat. no. 6203.0). Care should be exercised when using these series as some estimates are subject to high sampling variability.

Source: Unpublished data, *Labour Force, Estimates*.

	February 1999	February 2000			Proportion of total employed	
	Persons	Males	Females	Persons	February 1999	February 2000
	'000	'000	'000	'000	%	%
Managers and administrators						
Generalist managers	1.0	1.9	0.1	2.0	0.4	1.0
Specialist managers	3.9	3.8	1.0	4.8	2.0	2.5
Farmers and farm managers	5.6	5.8	2.5	8.4	2.9	4.2
<i>Total</i>	10.6	11.6	3.6	15.2	5.5	7.7
Professionals						
Science, building and engineering professionals	2.8	2.7	0.7	3.5	1.4	1.8
Business and information professionals	4.6	3.7	1.7	5.3	2.4	2.7
Health professionals	7.7	2.0	6.6	8.6	4.0	4.4
Education professionals	6.8	3.4	5.4	8.8	3.5	4.4
Social, arts and miscellaneous professionals	6.2	3.3	2.8	6.1	3.2	3.1
<i>Total</i>	28.1	15.1	17.2	32.3	14.5	16.3
Associate professionals						
Science, engineering and related associate professionals	3.5	2.3	0.4	2.7	1.8	1.4
Business and administration associate professionals	4.0	1.8	2.2	4.0	2.1	2.0
Managing supervisors (sales and service)	6.8	5.4	2.8	8.2	3.5	4.2
Other tradespersons and related workers	4.7	2.4	3.0	5.4	2.5	2.7
<i>Total</i>	17.9	11.6	7.6	19.2	9.3	9.7
Tradespersons and related workers						
Mechanical and fabrication engineering tradespersons	4.9	4.5	—	4.5	2.5	2.3
Automotive tradespersons	2.5	3.4	—	3.4	1.3	1.7
Electrical and electronics tradespersons	4.4	4.8	—	4.8	2.3	2.4
Construction tradespersons	5.4	4.3	—	4.3	2.8	2.2
Other tradespersons and related workers	9.2	6.8	3.0	9.8	4.8	4.9
<i>Total</i>	26.4	23.7	3.0	26.7	13.7	13.5
Advanced clerical and service workers						
Secretaries and personal assistants	2.2	—	2.5	2.5	1.1	1.3
Other advanced clerical and service workers	1.5	1.0	3.1	4.1	0.8	2.1
<i>Total</i>	3.7	1.0	5.6	6.6	1.9	3.3
Intermediate clerical, sales and service workers						
Intermediate clerical workers	22.1	3.9	14.5	18.4	11.4	9.3
Intermediate machine operators	3.9	2.3	0.7	3.0	2.0	1.5
Intermediate service workers	12.9	2.8	10.2	13.0	6.7	6.6
<i>Total</i>	38.8	9.0	25.4	34.4	20.1	17.4
Intermediate production and transport workers						
Intermediate plant operators	6.4	6.3	0.2	6.5	3.3	3.3
Intermediate machine operators	1.5	1.2	0.6	1.7	0.8	0.9
Road and rail transport drivers	6.1	6.7	0.2	6.9	3.2	3.5
Other intermediate production and transport workers	5.3	2.8	1.0	3.9	2.7	2.0
<i>Total</i>	19.4	17.0	2.0	19.0	10.0	9.6
Elementary clerical, sales and service workers						
Elementary clerks	2.1	1.4	1.2	2.6	1.1	1.3
Elementary sales workers	20.1	4.9	11.3	16.2	10.4	8.2
Elementary service workers	1.7	1	1.4	2.3	0.9	1.2
<i>Total</i>	23.8	7.3	13.9	21.1	12.3	10.7
Labourers and related workers						
Cleaners	5.7	1.4	4.5	5.9	3	3
Factory labourers	5.3	3.7	1.8	5.5	2.8	2.8
Other labourers and related workers	13.4	8.5	3.1	11.6	6.9	5.9
<i>Total</i>	24.4	13.6	9.4	22.9	12.7	11.6
Total employed	193.1	109.9	87.5	197.5	100	100

(a) For explanation of terms and concepts, refer to *Labour Force, Australia* (Cat. no. 6203.0).Source: Unpublished data, *Labour Force, Estimates*.

9

EMPLOYED WAGE AND SALARY EARNERS, SECTOR AND INDUSTRY(a)

	<i>Employees, November 1999</i>			<i>Percentage distribution</i>	
	<i>Private</i>	<i>Public</i>	<i>Total</i>	<i>November 1998</i>	<i>November 1999</i>
	'000	'000	'000	%	%
Agriculture, forestry, & fishing	n.a.	0.6	0.6	0.4	0.4
Mining	1.2	—	1.2	0.9	0.8
Manufacturing	21.4	0.1	21.5	14.3	13.5
Electricity, gas & water, Construction	4.1	1.9	6.1	4.1	3.8
Wholesale & Retail trade	37.3	—	37.3	20.0	23.5
Accommodation, cafes & restaurants	9.9	—	10.0	6.6	6.3
Transport & storage	5.2	0.8	6.0	3.9	3.8
Communication services	0.4	1.9	2.3	1.5	1.4
Finance, insurance, Property & business services	14.5	0.8	15.4	9.8	9.7
Education	3.0	14.4	17.4	11.4	11.0
Government administration and defence	—	9.5	9.5	6.4	6.0
Health and community services	12.8	8.3	21.1	15.1	13.3
Cultural, recreational, Personal and other services	7.4	3.2	10.6	5.7	6.7
Total all industries	117.1	41.5	158.7	100.0	100.0

(a) For explanation of terms and concepts, refer to *Employed Wage and Salary Earners, Australia* (Cat. no. 6248.0).

Source: *Employed Wage and Salary Earners, Australia* (Cat no. 6248.0).

10

AVERAGE HOURS WORKED

	<i>Average weekly total hours worked, all employed persons(a)</i>		
	<i>Males</i>	<i>Females</i>	<i>Persons</i>
1998			
November	38.1	27.1	33.2
1999			
February	36.7	25.6	31.8
May	38.8	28.0	34.0
August	39.2	28.1	34.3
November	39.8	27.2	34.1
2000			
February	37.1	24.7	31.6

(a) For explanation of terms and concepts, refer to *Labour Force, Australia* (Cat. no. 6203.0).

Source: *Unpublished data*.

11

JOB VACANCIES(a)(b)

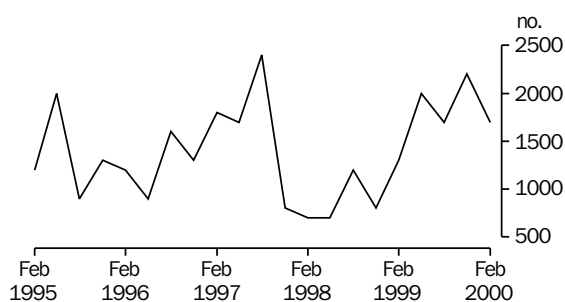
	no. '000	rate(c) %
1998		
November	0.8	0.5
1999		
February	1.3	0.8
May	2.0	1.4
August	1.7	1.0
November	2.2	1.3
2000		
February	1.7	1.0

(a) For explanation of terms and concepts, refer to *Job Vacancies, Australia* (Cat. no. 6354.0).

(b) Care should be exercised in using these series as some estimates are subject to high sampling variability.

(c) Job vacancies are expressed as a percentage of the number of job vacancies divided by the number of employees plus job vacancies.

JOB VACANCIES



12

INDUSTRIAL DISPUTES(a)

	Working days lost '000	Twelve months ended	Working days lost per thousand employees no.
1999		1999	
February	—	February	19
March	—	March	19
April	—	April	16
May	0.1	May	15
June	—	June	14
July	—	July	14
August	0.1	August	6
September	—	September	5
October	—	October	5
November	—	November	3
December	—	December	2
2000		2000	
January	0.1	January	3
February	—	February	3
Twelve months ended			
February 2000	0.4		

(a) For explanation of terms and concepts, refer to *Industrial Disputes, Australia* (Cat. no. 6321.0).

AVERAGE WEEKLY EARNINGS OF EMPLOYEES(a)—ORIGINAL AND TREND

	<i>Full time adult males</i>		<i>All males</i>	<i>Full time adult females</i>		<i>All females</i>	<i>Full time adult persons</i>		<i>All employees</i>
	<i>Weekly ordinary time earnings</i>	<i>Weekly total earnings</i>	<i>Weekly total earnings</i>	<i>Weekly ordinary time earnings</i>	<i>Weekly total earnings</i>	<i>Weekly total earnings</i>	<i>Weekly ordinary time earnings</i>	<i>Weekly total earnings</i>	<i>Weekly total earnings</i>
	\$	\$	\$	\$	\$	\$	\$	\$	\$
ORIGINAL									
1998									
November	738.50	783.70	672.90	621.30	637.00	407.70	699.30	734.70	537.00
1999									
February	747.40	803.10	696.30	619.90	632.20	422.50	705.10	746.40	560.50
May	731.90	771.20	657.80	613.70	625.30	421.00	692.00	722.00	539.60
August	749.70	778.50	660.50	619.10	629.90	420.70	703.60	726.10	537.60
November	761.00	801.60	682.50	641.30	658.90	433.90	719.00	751.50	554.90
2000									
February	767.70	799.30	686.20	639.60	656.70	444.20	723.90	750.60	566.70
TREND(b)									
1998									
November	736.30	784.10	672.80	617.30	630.60	414.90	696.50	732.70	543.00
1999									
February	738.70	784.30	672.80	616.40	629.10	417.10	697.30	731.90	544.60
May	743.00	784.20	671.10	618.80	630.90	420.60	700.80	732.30	545.30
August	749.70	786.50	671.40	625.50	638.60	426.60	707.00	735.70	547.20
November	756.90	791.80	675.20	632.40	647.30	432.20	713.40	741.20	551.30
2000									
February	764.30	799.30	681.30	638.10	654.80	438.30	719.30	747.70	558.30

(a) For explanation of terms and concepts, refer to *Average Weekly Earnings, States and Australia* (Cat. no. 6302.0).

(b) ABS trend estimates for the most recent months are revised, see Notes on page 2.

Source: *Average Weekly Earnings, States and Australia* (Cat. no. 6302.0).

	Index numbers				Percentage change		
	Mar qtr 1999	Jun qtr 1999	Sept qtr 1999	Dec qtr 1999	Mar qtr 1999 to Jun qtr 1999	Jun qtr 1999 to Sept qtr 1999	Sept qtr 1999 to Dec qtr 1999
SELECTED INDUSTRIES(c)							
Manufacturing	104.7	104.8	105.2	105.8	0.1	0.4	0.6
Retail trade	103.7	104.1	105.1	105.7	0.4	1.0	0.6
Transport & storage	104.9	105.4	107.2	107.6	0.5	1.7	0.4
Finance and insurance	103.3	n.a.	n.a.	n.a.	n.a.	n.a.	n.a.
Government administration and defence	102.7	103.2	104.4	104.7	0.5	1.2	0.3
Education	105.5	105.7	107.9	107.9	0.2	2.1	—
Health and community services	102.6	103.2	103.8	104.7	0.6	0.6	0.9
Total all industries(d)	103.9	104.6	105.5	106.0	0.7	0.9	0.5
OCCUPATION							
Professionals	104.7	105.1	106.5	106.8	0.4	1.3	0.3
Associate Professionals	104.3	104.9	105.5	105.9	0.6	0.6	0.4
Tradespersons & related workers	104.0	104.3	105.0	105.6	0.3	0.7	0.6
Intermediate clerical, sales & service workers	103.7	103.9	105.1	105.7	0.2	1.2	0.6
Intermediate production & transport workers	104.3	105.0	105.4	105.8	0.7	0.4	0.4
Elementary clerical, sales & service workers	105.0	105.2	107.5	108.0	0.2	2.2	0.5
Labourers & related workers	103.2	103.6	104.4	105.0	0.4	0.8	0.6
All occupations	103.9	104.6	105.5	106.0	0.7	0.9	0.5

(a) Base of each index: September quarter 1997 = 100.0.

(b) These indexes are a measure of quarterly changes in wage and salary costs for employee jobs. They were compiled for the first time for the December quarter 1997. They are one of four sets of indexes that together comprise the Wage Cost Index. For explanation of terms and concepts, refer to *Wage Cost Index, Australia* (Cat. no. 6345.0).

(c) Industry is shown at the ANZSIC division level for selected divisions.

(d) Excludes Agriculture, Forestry and Fishing.

Source: Unpublished data.

15

SUMMARY OF ANNUAL MOVEMENTS IN WAGES AND PRICES(a)

	<i>All groups</i>	<i>CPI. Hobart</i>	<i>Price Index of materials used in house building. All groups, Hobart(b)</i>	<i>Price Index of materials used in building other than house building. All groups, Hobart(b)</i>	<i>Average weekly total earnings, full-time adult employees(c)</i>
1996-97		1.5	-0.5	1.0	4.6
1997-98		-0.1	0.7	0.9	5.1
1998-99		1.0	1.0	0.9	2.4
1998					
March		-0.3	0.9	1.0	4.3
June		0.6	1.6	1.2	4.9
September		1.8	1.8	1.6	3.3
December		1.2	1.4	1.2	3.3
1999					
March		0.5	0.7	0.7	3.4
June		0.4	-0.1	0.2	-0.3
September		0.4	-0.3	0.1	0.8
December		1.1	0.2	-0.2	2.3
2000					
March		2.6	2.0	0.6	0.6

(a) Weekly award rates of pay collection has been discontinued from June 1997.

(b) Only quarterly data collected from June 1997. Earlier data has been re-compiled from monthly to quarterly.

(c) March, June, September and December data relates to February, May, August and November survey dates as published in Average Weekly Earnings, States and Australia (Cat. no. 6302.0).

Source: Consumer Price Index, Australia (Cat. no. 6401.0); Price Index of Materials Used in House Building, Six State Capital Cities (Cat. no. 6408.0), (quarterly from June 1997); Price Index of Materials Used in Other than House Building, Six State Capital Cities (Cat. no. 6407.0), (quarterly from June 1997); Average Weekly Earnings, States and Australia (Cat. no. 6302.0).

16

HOUSE PRICE INDEX NUMBERS(a)(b)

	<i>Established house price index</i>		<i>Project home price index</i>	
	<i>Index</i>	<i>% change(c)</i>	<i>Index</i>	<i>% change(c)</i>
1996-97	128.5	-1.0	123.3	-0.1
1997-98	125.4	-2.4	123.3	—
1998-99	123.2	-1.8	123.3	—
1997				
December	123.9	0.3	123.3	—
1998				
March	129.5	4.5	123.3	—
June	124.8	-3.6	123.3	—
September	123.8	-0.8	123.3	—
December	121.7	-1.7	123.3	—
1999				
March	123.7	1.6	123.3	—
June	123.6	-0.1	123.3	—
September	125.3	1.4	124.0	0.6
December	127.8	2.0	125.4	1.1

(a) Base of each Index: 1989-90 = 100.

(b) Used in calculating the mortgage interest charges component of the Consumer Price Index.

(c) Percentage change over previous period.

Source: House Price Indexes: Eight Capital Cities (Cat. no. 6416.0).

						Hobart
	Food	Clothing	Housing	Household equipment and operation	Transportation	Alcohol and tobacco
1997						
March	120.7	105.7	101.9	120.1	122.8	153.1
June	121.0	105.3	98.4	120.1	121.7	153.5
September	121.0	104.8	97.7	119.7	122.2	153.6
December	121.7	106.0	95.5	119.7	122.1	155.6
1998						
March	121.7	105.5	95.3	119.4	121.7	158.0
June	122.3	105.3	95.5	119.5	120.5	160.2
September	124.7	105.1	95.6	120.4	120.4	159.6
December	125.0	105.7	95.4	120.8	118.6	159.1
1999						
March	125.5	104.7	95.8	119.5	118.4	161.5
June	126.8	104.6	95.9	119.4	120.4	160.0
September	126.3	104.5	96.9	119.3	123.1	158.1
December	127.5	103.9	97.4	119.1	123.8	163.3
2000						
March	127.8	104.9	98.8	120.2	126.6	167.2
						Hobart
						Weighted average of eight capital cities
	Health and personal care	Recreation and education	Index, all groups	% change over previous period, all groups	Index	% change over previous period
1997						
March	159.4	120.5	121.9	0.5	120.5	0.2
June	162.6	119.2	121.3	-0.5	120.2	-0.2
September	153.0	119.2	120.6	-0.6	119.7	-0.4
December	160.9	120.6	121.2	0.5	120.0	0.3
1998						
March	162.7	121.7	121.5	0.2	120.3	0.3
June	166.1	122.6	122.0	0.4	121.0	0.6
September	171.5	122.5	122.8	0.7	121.3	0.2
December	169.5	124.2	122.7	-0.1	121.9	0.5
1999						
March	154.4	125.2	122.1	-0.5	121.8	-0.1
June	154.9	124.9	122.5	0.3	122.3	0.4
September	160.7	125.6	123.3	0.7	123.4	0.9
December	160.0	125.6	124.0	0.6	124.1	0.6
2000						
March	161.9	125.7	125.3	1.0	125.2	0.9

(a) Base year: 1989-90 = 100.

(b) Further information on construction of CPI indexes is contained in the bulletin the *Australian Consumer Price Index: Concepts, Sources and Methods* (Cat. no. 6461.0).

Source: Consumer Price Index, Australia (Cat. no. 6401.0).

Index numbers for selected major building materials

	<i>Structural timber</i>	<i>Clay bricks</i>	<i>Ready mixed concrete</i>	<i>Precast concrete products</i>	<i>Steel decking, cladding etc.</i>	<i>Structural steel</i>
1996-97	110.3	125.3	116.2	132.2	115.0	126.2
1997-98	108.9	129.0	118.0	131.5	117.8	127.2
1998-99	109.1	130.8	119.5	131.6	110.8	128.0
1998						
March	109.2	129.4	120.4	131.7	118.9	127.4
June	112.4	129.4	119.9	131.7	114.3	127.4
September	109.4	130.2	119.2	131.7	111.3	127.7
December	108.9	131.1	120.6	131.7	111.3	128.1
1999						
March	108.9	131.1	120.4	131.5	110.3	128.1
June	109.2	130.8	117.9	131.5	110.3	128.1
September	108.2	126.9	119.4	131.6	113.7	128.8
December	111.7	126.9	118.0	131.6	104.6	128.8
2000						
March	116.9	130.9	117.5	131.6	110.1	128.8

Index numbers for selected major building materials

	<i>Reinforcing steel bar, fabric and mesh</i>	<i>Aluminium windows</i>	<i>Fabricated steel products</i>	<i>Builders hardware</i>	<i>Sand and aggregate</i>	<i>Paint & other coatings</i>	<i>Non-ferrous pipes and fittings</i>
1996-97	110.7	105.9	113.3	117.2	132.7	126.6	165.2
1997-98	112.7	107.2	114.7	113.7	124.5	127.3	164.3
1998-99	113.4	107.3	116.0	113.4	127.9	133.3	161.2
1998							
March	113.5	106.8	114.8	112.8	127.5	130.5	162.9
June	113.4	108.4	116.1	114.0	127.5	130.7	162.6
September	113.4	108.4	116.1	113.7	127.9	132.7	162.8
December	113.3	106.7	116.1	113.9	127.9	133.9	160.2
1999							
March	113.4	106.9	116.1	114.8	127.9	134.2	161.4
June	113.4	107.0	115.6	111.3	127.9	132.5	160.2
September	113.4	107.0	116.1	110.8	135.4	131.7	162.4
December	110.2	107.0	113.6	114.8	139.4	133.5	166.0
2000							
March	109.1	109.9	113.1	120.2	150.4	135.2	167.2

(a) Base year: 1989-90 = 100.

(b) Index numbers in this table have been recompiled to reflect the change to a quarterly collection basis from June 1997.

	<i>All electrical materials</i>		<i>All mechanical services</i>		<i>All plumbing materials</i>	
	<i>Index</i>	<i>% change over previous period</i>	<i>Index</i>	<i>% change over previous period</i>	<i>Index</i>	<i>% change over previous period</i>
1996–97	117.4	–1.0	117	1.7	122.8	–3.8
1997–98	117.2	–0.2	117	—	121.9	–0.7
1998–99	115.8	–1.2	119	1.7	124.5	2.1
1998						
March	116.9	–0.8	117.4	0.5	121.6	–0.3
June	116.5	–0.3	117.1	–0.3	121	–0.5
September	116.1	–0.3	117.8	0.6	124.9	3.2
December	116.8	0.6	119.1	1.1	124.1	–0.6
1999						
March	115.2	–1.4	119.4	0.3	124.4	0.2
June	115.2	—	119.5	0.1	124.5	0.1
September	115.9	0.6	119.3	–0.2	122.3	–1.8
December	117.5	1.4	119.8	0.4	126.5	3.4
2000						
March	118.3	0.7	120.3	0.4	128	1.2
	<i>All groups excluding electrical materials and mechanical services</i>		<i>All groups</i>			
	<i>Index</i>	<i>% change over previous period</i>	<i>Index</i>	<i>% change over previous period</i>		
1996–97	116.8	1.1	116.3	1		
1997–98	118	1	117.4	0.9		
1998–99	118.8	0.7	118.5	0.9		
1998						
March	118.2	0.4	117.7	0.4		
June	118.9	0.6	118.1	0.3		
September	119.1	0.2	118.4	0.3		
December	119	–0.1	118.6	0.2		
1999						
March	118.8	–0.2	118.5	–0.1		
June	118.4	–0.3	118.3	–0.2		
September	118.8	0.3	118.5	0.2		
December	118.4	–0.3	118.4	–0.1		
2000						
March	119.3	0.8	119.2	0.7		

(a) Base year: 1989–90 = 100.

(b) Index numbers in this table have been recompiled to reflect the change to a quarterly collection basis from June 1997.

Source: Price Index of Materials Used in Other than House Building, Six State Capital Cities (Cat. no. 6407.0).

	Dairy products(a)			Staff hours worked	
	Whole milk(b)	Factory butter(c)	Factory cheese	Textile manufacturing(d)	Vegetable preserving
	million litres	tonnes	tonnes	'000	'000
1996-97	529.4	10 869	25 398	1 349	1 534
1997-98	542.8	8 745	26 835	1 125	1 128
1998-99	603.4	11 546	29 973	1 061	1 084
1999					
March	54.0	985.0	2 909	96.0	96.0
April	44.3	992.0	2 353	82.0	90.0
May	35.1	1 180	980.0	88.0	110.0
June	19.6	501.0	1 187	98.0	99.0
July	13.6	307.0	431.0	79.0	78.0
August	25.2	244.0	1 161	94.0	97.0
September	60.8	406.0	3 599	96.0	62.0
October	89.3	1 257	3 850	92.0	66.0
November	87.1	1 508	4 054	94.0	104.0
December	81.6	1 562	4 714	71.0	87.0
2000					
January	66.8	879.0	3 735	43.0	60.0
February	n.y.a.	n.y.a.	n.y.a.	96.0	90.0
March	n.y.a.	n.y.a.	n.y.a.	103.0	92.0
	Newsprint(e)	Refined zinc	Metallurgical refining	Electricity(g)	
	'000 tonnes	'000 tonnes	Index(f)	million kW.h	
1996-97	232.7	207.7	116.1	9 543	
1997-98	n.p.	197.0	116.6	9 700	
1998-99	n.p.	214.3	125.0	9 910	
1999					
March	n.p.	17.4	124.6	(Mar. qtr)	2 260
April	n.p.	19.1	132.0		..
May	n.p.	19.8	133.9		..
June	n.p.	19.4	133.6	(June qtr)	2 570
July	n.p.	18.8	133.8		..
August	n.p.	20.7	138.2		..
September	n.p.	19.1	130.2	(Sept qtr)	2 680
October	n.p.	19.4	130.5		..
November	n.p.	19.9	130.3		..
December	n.p.	19.3	129.6	(Dec qtr)	2 390
2000					
January	n.p.	20.1	130.3		..
February	n.p.	18.6	126.4		..
March	n.p.	19.6	141.2	(Mar. qtr)	2 360

(a) Source: Australian Dairy Corporation.

(b) Includes the whole milk equivalent of farm cream intake.

(c) Includes butter equivalent of butter oil.

(d) Includes spinning, weaving and carpet making. Reported by establishments which manufacture textiles only, or manufacture clothing and textiles in the one plant.

(e) Excludes production of directory newsprint and high grade specialty paper.

(f) Metallurgical refining index (Base year: 1979-80 = 100.0). Output from selected establishments covering the smelting and refining of ferro-alloys, zinc and aluminium. The weighting pattern is based on the establishments' value added as derived from the 1979-80 manufacturing Census. For multi product establishments, value added was apportioned to products on the basis of gross receipts from each product.

(g) Collected on a quarterly basis as from 1997.

Source: Unpublished data.

20

LIVESTOCK SLAUGHTERING

	Cattle					
	Bulls, bullocks and steers	Cows and heifers	Calves	Sheep	Lambs	Pigs
	'000	'000	'000	'000	'000	'000
1996-97	109.4	93.2	43.5	367.7	358.2	73.3
1997-98	93.4	123.6	53.9	461.0	423.3	78.1
1998-99	94.8	116.3	61.0	439.9	480.1	81.2
1998						
March	8.2	9.7	0.6	48.6	40.9	5.4
1999						
March	7.3	10.0	0.5	44.4	45.8	8.5
April	8.9	11.3	1.9	36.4	44.4	6.8
May	9.4	11.2	1.6	33.6	39.6	6.4
June	10.2	11.0	1.0	40.5	43.8	8.8
July	10.1	8.7	2.2	36.3	39.8	6.6
August	8.4	6.0	26.7	24.8	38.6	6.5
September	8.0	6.6	27.2	24.3	32.0	6.9
October	8.0	7.8	7.7	38.7	33.6	4.5
November	8.4	7.8	0.9	45.6	31.3	4.7
December	9.6	10.1	0.2	67.5	36.5	7.2
2000						
January	8.9	8.1	0.2	55.6	38.4	4.3
February	9.3	10.1	0.2	68.0	46.0	5.3
March	11.7	11.1	0.8	76.4	55.5	6.8

Source: Unpublished data.

21

LIVESTOCK SLAUGHTERING—SEASONALLY ADJUSTED(a) AND TREND(b)

	Seasonally adjusted			Trend		
	Cattle and calves	Sheep and lambs	Pigs	Cattle and calves	Sheep and lambs	Pigs
	'000	'000	'000	'000	'000	'000
1998						
March	22.8	76.3	5.7	23.6	72.6	6.3
1999						
March	21.9	72.1	8.1	21.8	73.9	6.6
April	22.3	70.6	6.8	22.3	75.4	6.9
May	22.0	73.1	6.6	23.1	79.2	7.0
June	23.1	81.4	7.3	24.3	85.1	7.0
July	24.4	92.4	5.7	25.2	91.2	6.8
August	30.0	115.5	7.8	25.5	95.0	6.6
September	25.8	82.8	6.6	25.1	95.0	6.3
October	23.7	100.9	5.1	24.1	91.8	6.0
November	21.8	84.1	5.8	23.3	87.6	5.7
December	19.4	77.7	5.6	22.9	84.8	5.6
2000						
January	25.1	77.9	4.9	23.2	84.1	5.5
February	23.9	89.0	6.2	23.7	84.5	5.5
March	26.8	94.7	5.8	24.7	87.1	5.6

(a) Seasonally adjusted factors are reviewed annually to take account of each additional year's original data. The results of the review are used to compile revised seasonally adjusted and trend estimates; see Notes page 2.

(b) ABS trend estimates for the most recent months are revised; see Notes page 2.

Source: Unpublished data.

22

MEAT PRODUCTION(a)

	<i>Beef</i>	<i>Veal</i>	<i>Mutton</i>	<i>Lamb</i>	<i>Pigmeat(b)</i>	<i>Total</i>
	<i>tonnes</i>	<i>tonnes</i>	<i>tonnes</i>	<i>tonnes</i>	<i>tonnes</i>	<i>tonnes</i>
1996-97	51 506	905	7 820	6 767	4 883	71 826
1997-98	53 061	1 148	9 840	8 072	4 915	77 042
1998-99	53 273	1 242	8 725	9 223	5 241	77 701
1998						
March	4 629	14	1 013	809	351	6 817
1999						
March	4 467	14	891	876	547	6 795
April	5 171	44	735	885	452	7 287
May	5 340	36	666	771	420	7 232
June	5 561	21	802	851	584	7 819
July	5 086	46	722	775	439	7 067
August	3 907	520	489	777	396	6 089
September	3 897	524	480	621	439	5 961
October	4 187	154	754	650	282	6 026
November	4 348	19	926	601	286	6 180
December	5 277	6	1 414	695	424	7 816
2000						
January	4 662	7	1 120	731	269	6 789
February	5 154	7	1 364	884	333	7 741
March	6 091	20	1 518	1 071	425	9 125

(a) Carcass weight.

(b) Includes pork used for production of bacon and ham.

Source: Unpublished data.

23

PRINCIPAL MINERAL CONCENTRATES PRODUCED

	<i>Copper</i>	<i>Iron (pellets)</i>	<i>Lead</i>	<i>Lead-zinc</i>	<i>Tin</i>	<i>Zinc</i>
	<i>'000 tonnes</i>	<i>'000 tonnes</i>	<i>'000 tonnes</i>	<i>'000 tonnes</i>	<i>'000 tonnes</i>	<i>'000 tonnes</i>
1996-97	99.7	809.4	101.4	38.0	16.3	356.9
1997-98	109.6	820.8	84.6	26.2	16.2	335.4
1998-99	76.8	1 816.1	101.8	12.6	12.5	382.3
1998						
March	26.1	253.8	21.9	8.2	3.3	79.4
June	27.8	402.5	18.1	6.0	4.4	80.1
September	25.8	453.3	21.5	5.6	1.3	92.0
December	29.9	478.2	26.1	3.2	4.0	95.3
1999						
March	11.0	481.2	29.5	2.5	3.7	97.1
June	10.0	403.4	24.7	1.5	3.6	98.0
September	10.2	479.5	28.4	2.7	3.9	94.8
December	10.1	568.2	28.1	2.5	4.0	86.2
2000						
March	9.3	517.7	22.4	1.4	3.3	70.4

Source: Mineral Resources Tasmania, Department of Infrastructure, Energy and Resources.

	Tasmanian-grown logs delivered					Sawn, peeled and sliced timber produced(a)				
	<i>Eucalypts</i>	<i>Hardwoods, excluding eucalypts(b)</i>	<i>Plant- ation(c) softwoods</i>	<i>Native soft- woods(d)</i>	<i>Total</i>	<i>Eucalypts</i>	<i>Hardwoods, excluding eucalypts(b)</i>	<i>Plant- ation(c) softwoods</i>	<i>Native soft- woods(d)</i>	<i>Total</i>
	'000 m ³	'000 m ³	'000 m ³	'000 m ³	'000 m ³	'000 m ³	'000 m ³	'000 m ³	'000 m ³	'000 m ³
1996-97	500.8	17.0	352.9	1.2	871.9	165.8	4.3	158.0	0.5	328.5
1997-98	496.8	24.3	357.7	1.6	880.3	171.1	5.3	167.3	0.4	344.2
1998-99	499.9	22.6	351.9	1.0	875.4	159.7	5.1	169.7	0.3	334.8
1998										
March	105.0	13.8	99.5	0.3	218.6	32.4	1.2	44.6	0.1	78.3
June	128.9	4.6	86.5	0.6	220.6	41.1	1.6	39.1	0.1	81.9
September	129.9	3.8	88.7	0.2	222.7	43.9	1.4	41.5	—	86.8
December	134.6	2.9	81.3	0.2	218.9	40.8	1.2	42.5	0.1	84.7
1999										
March	110.8	9.7	90.7	0.2	211.4	35.4	0.8	42.6	—	78.9
June	124.6	6.1	91.3	0.3	222.3	39.6	1.7	43.1	0.1	84.5
September	136.0	6.3	109.4	0.2	252.0	46.2	1.3	49.1	0.1	96.8
December	132.5	5.1	87.8	0.2	225.6	45.8	1.5	46.5	0.1	93.9
2000										
March	104.3	10.0	100.7	0.4	215.3	37.8	1.3	47.8	0.1	87.0

(a) Includes plywood, veneer and sliced timber production converted to an equivalent cubic measurement.

(b) Includes blackwood, myrtle, sassafras etc.

(c) Radiata pine.

(d) Includes Huon pine, celery top pine and King William pine.

Source: Unpublished data.

25

CHIPPING AND GRINDING OF WOOD(a)

	Producing locations(b)	Materials used(c)		Chipped and ground wood production '000 tonnes green weight
		Logs delivered(d)	Sawmill offcuts	
	no.	'000 m ³	'000 m ³	
1996-97	27	3 207.4	433.2	3 609.3
1997-98	28	3 998.1	457.9	4 440.1
1998-99	29	3 459.6	373.4	3 929.9
1998				
March	28	1 014.7	116.6	1 157.7
June	28	1 048.0	120.9	1 118.3
September	29	872.5	87.3	981.5
December	29	798.3	112.0	889.5
1999				
March	29	862.9	79.2	997.7
June	29	925.9	94.9	1 061.1
September	30	1 056.8	134.1	1 225.4
December	30	1 075.4	96.4	1 207.3
2000				
March	30	1 152.1	103.6	1 308.7

(a) Both hardwoods and softwoods, separate details are not available.

(b) Capable of producing at end of year or actually producing during quarter.

(c) Data reported by weight, converted to cubic measure by the factor of 0.95 m³ per tonne.

(d) Includes log equivalent of limbwood and billets.

Source: Unpublished data.

26

LOGS DELIVERED FOR MILLING OR CHIPPING

	Sawmilling and plywood milling			Chipping and grinding(a)			Total		
	Crown land(b)	Private land	Total	Crown land(b)	Private land	Total	Crown land(b)	Private land	Total
	'000 m ³	'000 m ³	'000 m ³	'000 m ³	'000 m ³	'000 m ³	'000 m ³	'000 m ³	'000 m ³
1996-97	725.6	146.4	871.9	1 627.4	1 580.0	3 207.4	2353.0	1 726.3	4 079.3
1997-98	750.7	129.6	880.3	1 894.9	2 103.1	3 998.1	2 645.7	2 232.7	4 878.3
1998-99	754.2	121.2	875.4	1 562.6	1 897.0	3 459.6	2 316.7	2 018.2	4 334.9
1998									
March	191.9	26.7	218.6	466.6	548.1	1 014.7	658.5	574.9	1 233.3
June	191.2	29.4	220.6	478.5	569.5	1 048.0	669.7	598.9	1 268.6
September	188.3	34.3	222.7	341.0	531.5	872.5	529.4	565.8	1 095.2
December	185.5	33.4	218.9	422.4	375.9	798.3	607.9	409.3	1 017.2
1999									
March	184.1	27.3	211.4	367.0	495.8	862.9	551.1	523.2	1 074.3
June	196.2	26.1	222.3	432.1	493.8	925.9	628.3	519.9	1 148.2
September	221.8	30.2	252.0	554.0	502.7	1 056.8	775.8	532.9	1 308.7
December	202.5	23.1	225.6	643.1	432.3	1 075.4	845.6	455.4	1 301.0
2000									
March	192.1	23.2	215.3	585.3	566.9	1 152.1	777.3	590.1	1 367.4

(a) Logs used are generally below sawmilling standard: includes log equivalent of limbwood and billets.

(b) Comprises all areas (including concession areas) from which royalties are payable to Forestry Tasmania.

Source: Unpublished data.

							Value		
	Dwelling units				Non-residential buildings(d)				
	New houses	New other residential buildings(a)	Other dwelling units created (conversions etc.)(b)	Total dwelling units	New dwelling units	Alterations and additions to residential buildings(c)	Private	Total	Total of all building
	no.	no.	no.	no.	\$'000	\$'000	\$'000	\$'000	\$'000
1996-97	1 593	251	17	1 861	157 428	35 323	121 490	158 970	351 720
1997-98	1 419	219	5	1 643	142 366	38 432	82 734	125 466	306 264
1998-99	1 297	104	9	1 410	131 241	36 795	115 752	174 545	342 580
1999									
March	116	9	1	126	12 077	3 092	10 237	16 463	31 632
April	110	14	2	126	12 418	3 917	23 814	26 864	43 198
May	94	—	1	95	8 517	2 678	5 303	10 122	21 317
June	76	11	1	88	8 955	3 526	5 321	7 266	19 746
July	147	9	2	158	15 197	3 728	15 315	18 702	37 627
August	101	16	1	118	11 734	3 861	8 174	10 176	25 770
September	r 115	4	—	r 119	11 924	r 3 323	23 142	23 267	r 38 514
October	142	19	—	161	15 563	4 253	8 786	9 840	29 656
November	155	26	2	183	15 696	3 939	4 334	6 204	25 839
December	160	20	—	180	18 344	2 646	8 166	13 091	34 081
2000									
January	r 139	28	13	r 180	r 21 182	4 342	5 811	6 355	r 31 879
February	135	33	0	168	16 458	4 333	20 656	21 394	42 185
March	150	12	3	165	17 309	3 831	6 591	9 338	30 477

(a) New individual dwelling units (e.g. flats, home units and villa units).

(b) From alterations and additions to residential building, conversions of non-residential building to residential building etc.

(c) Valued at \$10,000 and over. Includes conversions and dwelling units approved as part of alterations and additions or as part of the construction of non-residential building.

(d) Comprises non-residential building (new plus alterations and additions) valued at \$50,000 and over.

Source: Building Approvals, Tasmania (Cat. no. 8731.6).

28

SECURED HOUSING COMMITMENTS(a)—ORIGINAL, SEASONALLY ADJUSTED AND TREND

	Total number of dwellings(b)			Total value of commitments(c)		
	Original	Seasonally adjusted	Trend	Original	Seasonally adjusted	Trend
	no.	no.	no.	\$m	\$m	\$m
1999						
March	1 027	895	885	92	77	76
April	854	848	865	71	75	74
May	915	857	845	76	72	71
June	818	816	838	63	66	69
July	806	828	846	67	69	68
August	859	848	859	68	66	67
September	888	857	870	69	64	68
October	869	929	871	67	70	68
November	923	930	859	76	74	68
December	774	772	838	67	67	68
2000						
January	634	751	814	53	62	67
February	850	859	793	71	72	67
March	880	753	774	73	63	66

(a) New seasonal adjustment factors resulting from the annual seasonal reanalysis were introduced in the January 1998 issue.

(b) Includes new dwellings, established dwellings and refinancing. Excludes alterations and additions.

(c) Commitment is a firm offer of housing finance. It either has been, or is normally expected to be, accepted. Includes commitments to provide housing finance to employees and commitments accepted and cancelled in the same month. Excludes alterations and additions. Includes refinancing.

Source: *Housing Finance for Owner Occupation, Australia* (Cat. no. 5609.0).

29

PRIVATE NEW CAPITAL EXPENDITURE BY TYPE OF ASSET(a)(b)

	Buildings and structures	Equipment, plant and machinery	Total
	\$m	\$m	\$m
1997-98	169	477	646
1998-99	130	345	475
1998			
December	25	70	95
1999			
March	30	85	115
June	35	89	124
September	14	83	97
December	16	99	114

(a) Estimates based on a sample survey and therefore subject to sampling variability. Covers selected industries only—mining, manufacturing, finance, property and other selected industries.

(b) Current prices.

Source: *State Estimates of Private New Capital Expenditure* (Cat. no. 5646.0).

	<i>Deposits</i>				
	<i>Current bearing interest</i>	<i>Current not bearing interest</i>	<i>Fixed</i>	<i>Investment savings accounts</i>	<i>Statement savings accounts</i>
	\$m	\$m	\$m	\$m	\$m
1999					
March	814	260	1 926	649	266
April	801	258	1 928	638	269
May	784	255	1 921	627	270
June	784	255	1 925	627	270
July	775	248	1 964	616	273
August	783	246	1 992	614	278
September	796	243	2 006	610	280
October	819	249	2 015	608	279
November	850	252	1 951	604	281
December	870	269	1 602	599	283
2000					
January	861	260	1 098	599	283
February	862	260	1 039	595	282
March	878	276	1 106	593	283

	<i>Deposits</i>			<i>Loans(b)</i>
	<i>Passbook/school savings accounts</i>	<i>Other</i>	<i>Total</i>	
	\$m	\$m	\$m	
1999				
March	80	89	4 084	5 018
April	87	92	4 073	5 029
May	93	92	4 042	5 080
June	92	92	4 044	5 107
July	77	105	4 058	5 081
August	89	93	4 093	4 765
September	78	91	4 103	4 987
October	88	84	4 143	4 972
November	87	84	4 109	4 984
December	83	84	3 792	4 962
2000				
January	83	82	3 266	4 950
February	82	82	3 202	5 039
March	81	82	3 301	5 056

(a) Details are the averages of weekly figures for each month. The figures are derived from returns submitted by banks authorised under the *Banking Act* together with similar returns voluntarily submitted by the State banks; they exclude the Reserve Bank.

(b) Excludes non-resident loans.

Source: Reserve Bank of Australia.

	<i>Establish- ments</i>	<i>Guest rooms</i>	<i>Bed spaces</i>	<i>Persons employed</i>	<i>Room nights occupied</i>	<i>Room occupancy rate</i>	<i>Guest nights</i>	<i>Bed occupancy rate</i>	<i>Guest arrivals</i>	<i>Takings from accommodation</i>
	<i>no.</i>	<i>no.</i>	<i>no.</i>	<i>no.</i>	<i>'000</i>	<i>%</i>	<i>'000</i>	<i>%</i>	<i>'000</i>	<i>\$'000</i>
LICENSED HOTELS WITH FACILITIES										
1998										
December qtr	54	2 897	7 910	2 958	151.0	56.7	241.9	33.2	132.2	13 462
1999										
October	n.a.	n.a.	n.a.	n.a.	52.2	58.0	82.6	33.3	48.4	3 829
November	n.a.	n.a.	n.a.	n.a.	54.0	62.1	84.1	35.0	49.2	4 589
December	n.a.	n.a.	n.a.	n.a.	43.9	48.8	75.2	30.2	41.8	3 789
December qtr	55	2 929	8 071	3 074	150.1	56.2	241.8	32.8	139.5	12 207
MOTELS AND GUEST HOUSES WITH FACILITIES										
1998										
December qtr	51	1 748	5 391	740	85.8	53.3	155.7	31.4	84.4	7 538
1999										
October	n.a.	n.a.	n.a.	n.a.	30.1	55.4	58.4	34.7	34.5	2 363
November	n.a.	n.a.	n.a.	n.a.	30.1	57.2	55.7	34.2	32.8	2 393
December	n.a.	n.a.	n.a.	n.a.	24.0	44.3	47.5	28.2	28.7	2 066
December qtr	51	1 752	5 431	735	84.2	52.2	161.6	32.3	96.0	6 822
SERVICED APARTMENTS										
1998										
December qtr	24	864	3 386	426	47.9	60.3	100.7	32.3	53.1	4 886
1999										
October	n.a.	n.a.	n.a.	n.a.	17.4	64.8	37.8	35.0	17.6	1 781
November	n.a.	n.a.	n.a.	n.a.	17.0	65.4	32.1	30.6	14.5	1 748
December	n.a.	n.a.	n.a.	n.a.	15.7	58.5	34.3	31.7	15.5	1 735
December qtr	24	865	3 487	419	50.0	62.9	104.2	32.5	47.7	5 264
TOTAL ESTABLISHMENTS										
1998										
December qtr	129	5 509	16 687	4 124	284.7	56.2	498.3	32.5	269.7	25 886
1999										
October	n.a.	n.a.	n.a.	n.a.	99.6	58.3	178.8	34.1	100.6	7 974
November	n.a.	n.a.	n.a.	n.a.	101.0	61.0	171.8	33.8	96.6	8 730
December	n.a.	n.a.	n.a.	n.a.	83.6	48.9	156.9	29.9	86.0	7 589
December qtr	130	5 546	16 989	4 228	284.3	56.0	507.5	32.6	283.2	24 293

(a) Comprising establishments with 15 or more rooms or units. Note: The Survey of Tourist Accommodation has been substantially revised from the previous March quarter 1998. Information in respect of 1998 has been retabulated on the basis of the new scope; 1998 data will, therefore, differ from previously published data. For an explanation, including definitions, refer to *Tourist Accommodation, Australia* (Cat. no. 8635.0).

Source: *Tourist Accommodation, Australia* (Cat. no. 8635.0). For more detailed information, see *Tourist Accommodation, Small Area Data, Tasmania* (Cat. no. 8635.6.40.001).

32

NATIONAL PARKS, PERSON ENTRIES(a)

<i>Tasmanian National Park attendance</i>							
	<i>Cradle Mountain(b) (Lake Dove)</i>	<i>Lake St Clair(b) (Cynthia Bay)</i>	<i>Freycinet(b)</i>	<i>Mt Field(b)</i>	<i>Asbestos Range(c) (Bakers Beach)</i>	<i>Mole Creek Karst(d) (Marakoopa Cave)</i>	<i>Maria Island(e) (Darlington)</i>
	<i>no.</i>	<i>no.</i>	<i>no.</i>	<i>no.</i>	<i>no.</i>	<i>no.</i>	<i>no.</i>
1999							
March	20 000	14 400	27 700	16 300	2 900	2 801	1 603
April	19 000	10 900	25 700	14 600	2 700	2 560	1 645
May	9 000	4 700	14 200	6 500	1 500	1 656	751
June	8 000	3 000	11 900	5 000	1 400	1 530	556
July	8 100	2 700	10 400	4 900	1 300	1 040	22
August	2 700	9 500	6 800	1 500	1 400	436	—
September	14 600	6 000	14 800	7 800	1 800	2 193	1 002
October	15 300	8 700	18 200	9 200	2 800	2 080	1 070
November	16 600	10 600	25 600	r 9 800	2 600	2 837	1 060
December	22 500	10 300	32 600	r 14 620	4 700	4 049	1 305
2000							
January	33 100	19 400	48 200	22 100	6 400	4 320	2 315
February	r 22 300	14 400	33 400	16 400	3 700	2 591	1 617
March	r 21 800	15 000	31 700	13 500	3 300	2 750	1 642
April	23 000	13 100	44 000	14 000	2 600	3 225	1 615

(a) A 'person entry' occurs whenever a visitor enters a National Park. Measurement occurs at the designated sites in brackets.

(b) Estimated through a combination of traffic and booth counts.

(c) Estimated through traffic counts.

(d) Number of people taken on a guided tour.

(e) All overnight walkers registered in the park.

Source: *Tasmanian Parks and Wildlife Service, Department of Primary Industries, Water and Environment.*

33

TRACKS IN NATIONAL PARKS, WALKER REGISTRATIONS(a)

	<i>Overland(b)</i>	<i>South Coast(c)</i>	<i>Freycinet(d)</i>	<i>Port Davey(c)</i>	<i>Frenchmans Cap</i>
<i>Month of departure</i>	<i>no.</i>	<i>no.</i>	<i>no.</i>	<i>no.</i>	<i>no.</i>
1999					
March	1 019	85	226	14	59
April	777	92	182	10	99
May	111	8	57	—	30
June	69	3	97	1	18
July	48	—	93	—	13
August	45	3	119	—	16
September	p 157	10	114	2	24
October	p 202	16	196	1	22
November	p 753	56	251	10	37
December	p 1 446	r 227	386	r 99	113
2000					
January	p 1 558	r 328	587	r 75	218
February	p 1 195	r 169	335	r 30	161
March	p 999	p 124	317	p 24	110
April	p 784	n.y.a.	282	n.y.a.	58

(a) Numbers include only walkers who registered and represented their intention.

(b) Sum of registrations at Cradle Mt and Lake St Clair.

(c) Sum of registrations to walk the length of the track in any direction, irrespective of starting point.

(d) All overnight walkers registered in the park.

Source: *Tasmanian Parks and Wildlife Service, Department of Primary Industries, Water and Environment.*

	Passenger vehicles	Other vehicles(b)	Total(excl. motor cycles)	Vehicles registered by vehicle rental businesses(c)	Motor cycles
	no.	no.	no.	no.	no.
1996-97	11 772	2 741	14 513	2 341	481
1997-98	13 232	2 740	15 972	2 544	542
1998-99	12 359	2 786	15 145	1 771	568
1999					
March	985	242	1 227	20	45
April	879	219	1 098	—	45
May	838	275	1 113	2	35
June	859	270	1 129	16	28
July	1 059	290	1 349	171	53
August	1 026	244	1 270	235	29
September	1 240	218	1 458	470	42
October	885	245	1 130	138	65
November	964	292	1 256	151	49
December	1 626	273	1 899	835	58
2000					
January	748	204	952	59	29
February	782	210	992	1	52
March	888	240	1 128	10	44

(a) Includes State and Commonwealth Government owned motor vehicles and other than those belonging to the defence services. Excludes tractors, plant and equipment, caravans and trailers.

(b) Comprises utilities, panel vans, rigid and articulated trucks and other truck type vehicles (i.e. motor vehicles designed for purposes other than freight carrying, e.g. campervans, tow trucks, ambulances and hearses) and buses.

(c) These figures are included in previous columns.

Source: New Motor Vehicle Registrations, Australia (Cat. no. 9303.0.40.003) and unpublished data.

	<i>Trend estimates(b)</i>							<i>Total(c)</i>	Change from corresponding month of previous year
	Original	Food retailing	Clothing and soft good retailing	Household good retailing	Recreational good retailing	Hospitality and services			
	\$m	\$m	\$m	\$m	\$m	\$m	\$m		%
1996-97	3 022.6	1 290.1	182.4	323.3	187.2	460.7	3 032.2	..	
1997-98	3 133.4	1 345.0	188.3	303.4	215.7	436.0	3 133.9	..	
1998-99	3 142.7	1 344.0	189.5	312.9	203.1	430.5	3 150.2	..	
1999									
March	268.7	113.9	15.9	27.9	17.2	36.4	267.4	3.8	
April	261.2	113.9	15.8	27.6	17.4	36.3	268.0	4.3	
May	255.5	113.7	15.8	27.3	17.5	36.3	268.2	4.5	
June	251.0	113.6	15.6	27.1	17.6	36.4	268.4	4.5	
July	261.8	114.0	15.4	27.2	17.6	36.7	269.0	4.7	
August	256.6	114.8	15.1	27.4	17.7	37.2	270.0	5.0	
September	260.8	115.8	14.8	27.4	17.9	37.9	270.9	5.4	
October	268.9	116.7	14.5	27.4	18.0	38.5	270.9	5.2	
November	276.1	117.2	14.2	27.2	18.1	39.2	270.2	4.4	
December	364.9	117.6	14.0	27.1	18.0	40.0	269.4	3.2	
2000									
January	258.2	117.8	13.8	27.1	17.9	40.9	268.8	1.9	
February	254.3	118.0	13.6	27.2	17.8	41.9	268.3	0.9	
March	269.0	118.3	13.4	27.3	17.5	42.8	268.1	0.3	

(a) Excludes motor vehicles, parts, petrol, etc.

(b) Trend estimates for the most recent months have been revised. See Notes on page 2.

(c) Includes Department stores and Other retailing.

Source: *Retail Trade, Australia* (Cat. no. 8501.0).

	Tasmania				Australia			
	Imports	Imports change over preceding period	Exports	Exports change over preceding period	Imports	Imports change over preceding period	Exports(b)	Exports change over preceding period
	\$m	%	\$m	%	\$m	%	\$m	%
1996-97	396	13	1 708	5	78 998	2	78 932	4
1997-98	385	-3	2 136	25	90 684	15	87 768	11
1998-99	407	6	2 019	-5	97 611	8	85 991	-2
1999								
March	33	11	255	82	8 699	22	r 7 330	17
April	29	-13	198	r -22	7 731	-11	6 433	-12
May	29	0	139	-30	7 746	0	6 967	8
June	23	-22	243	75	8 142	5	6 892	-1
July	39	75	r 159	-35	8 181	0	7 158	4
August	32	-19	150	-5	8 871	8	7 349	3
September	43	34	115	-23	8 965	1	r 7 392	1
October	32	-26	222	93	10 211	14	r 7 987	8
November	33	4	155	-30	r 9 667	-5	r 8 470	6
December	31	-6	165	r 7	r 8 905	-8	r 8 374	-1
2000								
January	35	12	231	40	r 8 105	-9	r 6 811	-19
February	35	-1	r 187	-19	r 8 623	6	r 8 206	20
March	36	3	200	7	9 654	12	8 817	7

(a) It is difficult to get a complete picture of Tasmania's trade performance as imports recorded by the ABS include only goods imported directly into the State from overseas, and reported by the Australian Customs Service. Many of Tasmania's goods imported for direct consumption, or input into further processing industries, arrive via interstate ports, and are not included in this table.

(b) Includes re-exports

	European Community			East Asia					Total all countries
	United States of America	United Kingdom	Total European Community	Japan	Korea	Taiwan	Hong Kong	ASEAN(a)	
	\$'000	\$'000	\$'000	\$'000	\$'000	\$'000	\$'000	\$'000	
1996-97	117 245	166 308	299 844	467 855	64 135	93 951	100 881	364 586	1 708 322
1997-98	176 175	25 063	338 791	549 048	67 801	150 405	132 551	399 472	2 136 171
1998-99	235 787	28 691	278 037	r 466 626	101 177	150 071	152 533	353 441	2 019 182
1999									
March	37 059	4 124	86 867	41 498	7 925	11 682	11 872	38 793	255 336
April	31 625	3 548	17 877	34 933	9 824	10 190	15 591	27 285	197 762
May	16 130	2 544	9 143	33 234	4 965	12 897	14 322	22 457	138 931
June	13 810	1 855	76 630	58 220	12 947	13 709	13 184	30 452	243 056
July	25 199	2 834	14 114	25 878	9 485	13 917	17 716	31 017	158 655
August	13 943	792	5 106	41 207	7 389	16 731	18 708	25 769	150 057
September	11 467	r 916	6 845	r 28 486	7 093	14 051	9 514	r 19 719	r 115 077
October	15 629	3 383	82 622	r 45 827	8 844	12 201	r 9 066	r 24 584	r 222 320
November	9 367	1 141	6 210	40 317	12 089	15 738	13 760	r 32 597	r 155 142
December	14 110	364	6 495	40 165	13 507	14 735	r 17 715	r 28 967	r 165 291
2000									
January	r 15 113	1 214	76 008	r 37 408	9 180	16 838	17 086	r 29 971	r 231 188
February	r 21 269	951	r 11 595	r 49 135	r 13 376	r 18 241	r 20 481	r 32 892	r 186 552
March	14 905	1 538	12 741	37 609	14 829	17 819	22 397	49 023	199 987

(a) ASEAN member countries are: Brunei, Indonesia, Laos, Malaysia, Myanmar, Philippines, Singapore, Thailand and Viet Nam.

	<i>Meat and meat preparations</i>	<i>Dairy products</i>	<i>Fish, crustaceans and molluscs</i>	<i>Vegetables and fruit</i>	<i>Wood and woodchips</i>	<i>Textile fibres and wastes</i>	<i>Metallic ores and metal scrap</i>
	\$'000	\$'000	\$'000	\$'000	\$'000	\$'000	\$'000
1996-97	55 604	110 108	121 996	36 541	241 388	38 762	184 100
1997-98	71 918	133 675	141 205	55 242	311 359	29 641	254 054
1998-99	65 026	102 709	136 268	54 907	296 164	24 999	278 001
1999							
March	5 034	12 277	7 613	9 368	30 656	4 989	25 070
April	5 229	12 071	13 251	13 563	24 162	1 938	20 539
May	6 307	7 720	9 516	10 942	22 669	475	15 242
June	7 900	8 173	9 071	4 508	33 433	715	37 755
July	6 603	3 421	14 166	3 718	17 037	1 538	19 287
August	5 650	3 053	13 590	2 568	31 988	891	15 297
September	5 008	2 503	14 468	1 397	r 19 172	2 051	12 218
October	5 330	4 256	r 9 240	446	27 680	1 111	23 997
November	5 997	4 494	12 774	r 442	24 706	1 604	29 618
December	7307	3 723	16 013	422	r 23 387	3 913	28 970
2000							
January	r 6 296	7 366	11 677	754	32 065	1 460	21 075
February	r 8 342	r 5 679	r 11 464	r 3 485	r 32 384	1 812	r 13 880
March	9 465	7 642	12 693	9 049	26 371	4 519	19 364

	<i>Medical and pharmaceutical products</i>	<i>Paper and paperboard</i>	<i>Iron and steel</i>	<i>Non-ferrous metals</i>	<i>Road vehicles and transport equipment</i>	<i>Other and combined confidential items</i>	<i>Total all commodity groups</i>
	\$'000	\$'000	\$'000	\$'000	\$'000	\$'000	\$'000
1996-97	22 886	31 913	82 219	438 558	212 341	131 907	1 708 322
1997-98	34 755	21 222	76 463	557 126	280 251	169 261	2 136 171
1998-99	52 330	4 130	95 265	544 311	173 015	192 057	2 019 182
1999							
March	4 856	335	13 502	54 787	65 401	21 448	255 336
April	3 506	237	5 681	50 410	34 067	13 072	197 946
May	3 003	510	7 598	37 600	109	17 240	138 931
June	3 064	195	11 744	42 313	70 295	13 891	243 056
July	5 303	163	5 418	64 893	58	17 051	158 655
August	7 100	405	75	49 879	495	19 065	150 057
September	4 096	r 62	61	37 870	1 008	r 15 165	r 115 077
October	4 963	223	200	44 314	70 782	r 29 776	r 222 320
November	5 153	972	60	52 096	276	r 16 968	r 155 142
December	2 146	r 1 316	2 156	51 888	50	23 998	r 165 291
2000							
January	3 367	535	169	55 551	72 222	r 18 651	r 231 188
February	6 425	r 1 698	r 178	r 68 007	r 636	r 32 562	r 186 552
March	8 343	1 317	343	75 343	1 333	24 205	199 987

	NSW	Vic.	Qld	SA	WA	Tas.	Aust.(a)
Population							
Estimated resident population, September 1999 ('000) p	6 428.7	4 726.6	3 525.6	1 494.8	1 868.2	470.1	19 021.4
Proportion of Australian population, September 1999 (%) p	33.8	24.8	18.5	7.9	9.8	2.5	100.0
Population growth rate, 12 months to September 1999 (%) p	1.2	1.2	1.6	0.5	1.6	-0.3	1.2
Labour force							
Employment growth, 12 months to April 2000 (trend series) (%)							
Males	2.8	1.7	1.2	3.2	3.2	0.4	2.3
Females	5.3	4.2	2.8	2.3	4.1	4.1	4.1
Persons	3.9	2.8	1.9	2.8	3.6	1.9	3.1
Unemployment rate (trend series), April 2000 (%)	5.8	6.8	8.1	8.2	6.6	9.0	6.8
Unemployment growth, 12 months to April 2000 (trend series) (%)	-10.1	-9.1	3.0	-2.9	-0.6	-10.5	-5.8
Participation rate (trend series), April 2000 (%)	62.6	63.0	65.1	61.3	67.0	58.8	63.6
Job vacancy rate, February 2000 (%)	1.8	1.3	1.2	1.1	1.7	1.0	1.5
Working days lost through industrial disputes, 12 months to February 2000 (days per '000 employees)	119	125	53	30	66	3	91
Wages and prices							
Average weekly total earnings, full-time adult employees (trend series) February 2000 (\$)							
Males	929.60	839.80	807.60	813.70	906.80	799.30	873.00
Females	728.90	716.10	651.20	657.90	674.50	654.80	703.10
Persons	853.70	795.20	750.70	757.20	823.50	747.70	809.90
Average weekly total earnings, full-time adult employees, growth (trend), 12 months to February 2000 (%)	3.5	2.7	2.1	1.6	4.3	2.2	3.1
Consumer price index, all groups, annual growth to September quarter 1999 (%) (b)	1.8	1.9	1.2	1.7	1.9	0.4	1.7
Building							
% change in the number of total dwelling units approved (original) in the 12 months ended March 2000, over the same period previous year	-1.4	23.1	2.3	29.2	20.0	18.5	9.7
March 1999 to March 2000	-16.1	29.7	16.1	29.9	-8.8	31.0	5.7

For footnotes see end of table.

...continued

	NSW	Vic.	Qld	SA	WA	Tas.	Aust.(a)
Private investment and retail trade							
% change in private new capital expenditure, 12 months ended December 1999, over the same period previous year (original)	-4.5	0.2	3.6	-22.1	-27.9	-13.8	-8.0
% change in trend estimates turnover of retail establishments, March 2000 (change from corresponding month of the previous year)	1.9	3.0	3.1	3.8	3.1	0.3	2.7
Transport							
% change in number of new motor vehicles (excluding motorcycles) registered in the 12 months ended March 2000, over the same period previous year	-2.3	0.3	-17.4	-10.5	-11.4	-5.8	-6.3
Agriculture							
% change in the number of livestock slaughtered 12 months ended March 2000 over the same period previous year (original)							
Cattle and calves	-13.5	-12.5	2.0	-2.0	-10.0	6.0	-6.4
Sheep and lambs	-1.4	8.3	12.7	-12.0	4.1	12.9	2.3
Tourism—room occupancy rates							
Hotels, motels & guest houses, & serviced apartments with facilities, December quarter 1999 (%)	60.9	58.1	60.7	58.4	57.6	56	59.7
Australian National and State Accounts							
% change in Domestic (State) Final Demand(c), Chain Volume measures (trend series)							
Sep qtr 1999 to Dec qtr 1999	1	1.3	0.5	2	0.9	0.2	1.1
Dec qtr 1998 to Dec qtr 1999	6.5	6	2.5	6.5	3	4.6	4.9

(a) Australian totals include the ACT and NT, with the exception of Agriculture, which excludes both.

(b) CPI applies to State capitals.

(c) Total of four types of expenditure: Private investment, Private consumption, Government investment, Government consumption.

		Greater Hobart and Southern Statistical Divisions	Northern Statistical Division	Mersey-Lyell Statistical Division	Tasmania
Area, at 30 June 1996	Unit	25 521	19 935	22 507	67 964
Population					
Estimated resident population, 30 June 1996	no.	230 187	134 047	110 209	474 443
Estimated resident population, 30 June 1999	no.	228 855	133 016	108 390	470 261
Births 1998(a)	no.	2 828	1 621	1 515	5 974
Deaths 1998(a)	no.	1 798	975	823	3 596
Labour force (original), April 2000					
Total employed	no.	95 400	58 600	45 200	199 200
Total unemployed	no.	9 700	4 900	5 200	19 800
Unemployment rate	%	9.2	7.7	10.3	9.1
Participation rate	%	58.3	58.8	61.3	59.1
Schools, 1999(b)					
Government	no.	100	57	59	216
Non-government	no.	32	17	16	65
School students, 1999(b)(c)					
Government					
Males	no.	15 529.8	9 254.0	7 867.3	32 651.1
Females	no.	14 785.4	9 291.5	7 650.5	31 727.4
Total	no.	30 315.2	18 545.5	15 517.8	64 378.5
Non-government					
Males	no.	5 866.0	2 474.0	2 047.4	10 387.4
Females	no.	6 170.8	2 375.1	1 979.7	10 525.6
Total	no.	12 036.8	4 849.1	4 027.1	20 913.0
Educational qualification, 1996 Census(d)					
Bachelor degree or higher(e)	no.	17 058	7 152	3 908	28 184
Undergraduate diploma	no.	5 893	3 268	2 181	11 374
Associate diploma	no.	3 773	1 902	1 466	7 184
Skilled vocational	no.	16 255	10 040	8 841	35 238
Basic vocational	no.	4 548	2 632	2 305	9 515
Agriculture					
Establishments with agricultural activity, 1997–98 season	no.	1 138	1 584	1 761	4 483
Total area of establishments	ha.	751 167	837 147	326 171	1 914 485
Crops, production, 1997–98 season					
Potatoes	tonnes	2 785	119 771	251 022	373 578
Onions	tonnes	777	9 613	41 555	51 945
Apples	tonnes	36 097	4 427	6 168	46 693
Barley	tonnes	6 793	21 527	2 597	30 917
Livestock, 1997–98 season					
Beef cattle	no.	83 229	213 631	213 562	510 422
Dairy cattle	no.	7 845	79 693	130 180	217 718
Sheep and lambs	no.	1 768 448	1 926 966	173 454	3 868 868
Pigs	no.	3 235	14 899	6 165	24 299
Gross value of agricultural production, 1997–98	\$m	148	243	287	678

For footnotes see end of table.

...continued

	<i>Unit</i>	<i>Greater Hobart and Southern Statistical Divisions</i>	<i>Northern Statistical Division</i>	<i>Mersey-Lyell Statistical Division</i>	<i>Tasmania</i>
Business locations, September 1998					
Locations with manufacturing activity					
Less than 20 employees	no.	424	327	257	1 008
20 or more employees	no.	83	67	48	198
Total	no.	507	394	305	1 206
Locations with retail activity					
Less than 20 employees	no.	2 046	1 346	1 133	4 525
20 or more employees	no.	82	43	35	160
Total	no.	2 128	1 389	1 168	4 685
Building, 1998–99					
Total dwelling units approved	no.	731	431	248	1 410
Value of total residential building approved	\$'000	87 612	50 579	29 843	168 035
Value of total building approved	\$'000	199 614	83 883	59 083	342 580
Dwellings, Census 1996(d)					
Total dwellings	no.	98 815	57 467	45 529	201 820
Occupied private dwellings	no.	85 255	49 759	40 183	175 197
Fully owned	no.	34 338	21 563	18 359	74 260

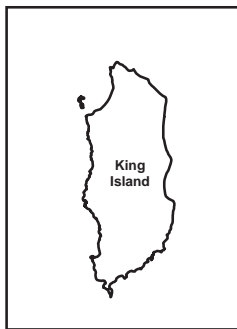
(a) Births and deaths are based on usual residence year of registration. Total Tasmania includes usual residences other than Tasmanian Statistical Divisions.

(b) Source: DETYA and Tasmanian Department of Education.

(c) Full-time equivalent.

(d) Total includes migratory statistical division.

(e) Includes higher degree, postgraduate diploma and bachelor degree.



Statistical Divisions

Statistical Division

NORTHERN

Local Government Area

Dorset



Based on ASGC 1996
Prepared by: Demography Section, ABS Hobart
© Commonwealth of Australia, 1998

FOR MORE INFORMATION...

- INTERNET** www.abs.gov.au the ABS web site is the best place to start for access to summary data from our latest publications, information about the ABS, advice about upcoming releases, our catalogue, and Australia Now—a statistical profile.
- LIBRARY** A range of ABS publications is available from public and tertiary libraries Australia-wide. Contact your nearest library to determine whether it has the ABS statistics you require, or visit our web site for a list of libraries.
- CPI INFOLINE** For current and historical Consumer Price Index data, call 1902 981 074 (call cost 75c per minute).
- DIAL-A-STATISTIC** For the latest figures for National Accounts, Balance of Payments, Labour Force, Average Weekly Earnings, Estimated Resident Population and the Consumer Price Index call 1900 986 400 (call cost 75c per minute).

INFORMATION SERVICE

Data which have been published and can be provided within five minutes are free of charge. Our information consultants can also help you to access the full range of ABS information—ABS user pays services can be tailored to your needs, time frame and budget. Publications may be purchased. Specialists are on hand to help you with analytical or methodological advice.

- PHONE** **1300 135 070**
- EMAIL** **client.services@abs.gov.au**
- FAX** 1300 135 211
- POST** Client Services, ABS, GPO Box 796, Sydney 1041

WHY NOT SUBSCRIBE?

ABS subscription services provide regular, convenient and prompt deliveries of ABS publications and products as they are released. Email delivery of monthly and quarterly publications is available.

- PHONE** 1300 366 323
- EMAIL** subscriptions@abs.gov.au
- FAX** 03 9615 7848
- POST** Subscription Services, ABS, GPO Box 2796Y, Melbourne 3001



2130360006003

ISSN 1034-1803

RRP \$18.00

© Commonwealth of Australia 2000

Produced by the Australian Bureau of Statistics